



**ELECTRONIC COPY**

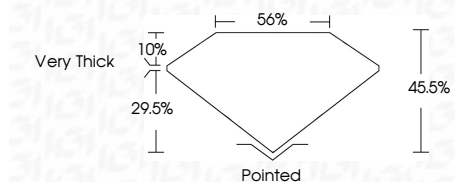
LG803657361  
Report verification at igi.org



May 27, 2026  
IGI Report Number **LG803657361**  
Description **LABORATORY GROWN DIAMOND**  
Shape and Cutting Style **TRIANGULAR BRILLIANT**  
Measurements **6.90 X 8.17 X 3.72 MM**

**GRADING RESULTS**

Carat Weight **1.03 CARAT**  
Color Grade **D**  
Clarity Grade **VVS 2**



**ADDITIONAL GRADING INFORMATION**

Polish **EXCELLENT**  
Symmetry **EXCELLENT**  
Fluorescence **NONE**  
Inscription(s) **(IGI) LG803657361**  
Comments: This Laboratory Grown Diamond was created by Chemical Vapor Deposition (CVD) growth process. Type IIa



May 27, 2026  
IGI Report No LG803657361  
**TRIANGULAR BRILLIANT**  
6.90 X 8.17 X 3.72 MM  
1.03 CARAT  
D  
VVS 2  
45.5%  
56%  
Very Thick  
Pointed  
EXCELLENT  
EXCELLENT  
NONE  
Inscription(s)  
(IGI) LG803657361  
Comments: This Laboratory Grown Diamond was created by Chemical Vapor Deposition (CVD) growth process. Type IIa

May 27, 2026  
IGI Report Number **LG803657361**  
Description **LABORATORY GROWN DIAMOND**  
Shape and Cutting Style **TRIANGULAR BRILLIANT**  
Measurements **6.90 X 8.17 X 3.72 MM**

**GRADING RESULTS**

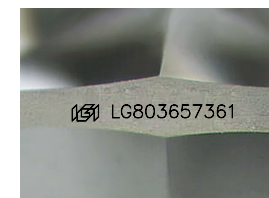
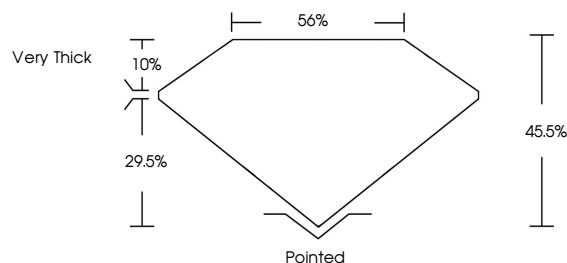
Carat Weight **1.03 CARAT**  
Color Grade **D**  
Clarity Grade **VVS 2**

**ADDITIONAL GRADING INFORMATION**

Polish **EXCELLENT**  
Symmetry **EXCELLENT**  
Fluorescence **NONE**  
Inscription(s) **(IGI) LG803657361**

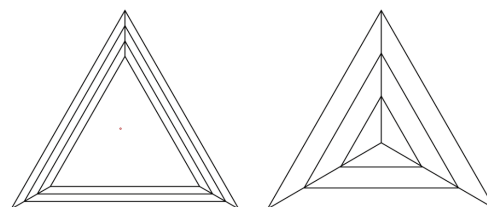
Comments: This Laboratory Grown Diamond was created by Chemical Vapor Deposition (CVD) growth process. Type IIa

**PROPORTIONS**



Sample Image Used

**CLARITY CHARACTERISTICS**



**KEY TO SYMBOLS**

Red symbols indicate internal characteristics.  
Green symbols indicate external characteristics.

**COLOR**

D E F G H I J Faint Very Light Light

**CLARITY**

FL	IF	VVS <sup>1-2</sup>	VS <sup>1-2</sup>	SI <sup>1-2</sup>	I <sup>1-3</sup>
Flawless	Internally Flawless	Very Very Slightly Included	Very Slightly Included	Slightly Included	Included

