



**ELECTRONIC COPY**

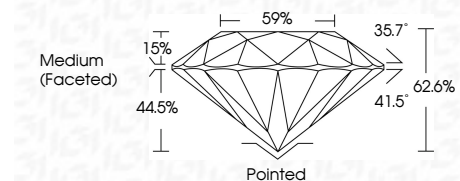
LG803655352  
Report verification at igi.org



May 22, 2026  
IGI Report Number **LG803655352**  
Description **LABORATORY GROWN DIAMOND**  
Shape and Cutting Style **ROUND BRILLIANT**  
Measurements **6.50 - 6.55 X 4.09 MM**

**GRADING RESULTS**

Carat Weight **1.07 CARAT**  
Color Grade **D**  
Clarity Grade **VVS 1**  
Cut Grade **EXCELLENT**



**ADDITIONAL GRADING INFORMATION**

Polish **EXCELLENT**  
Symmetry **EXCELLENT**  
Fluorescence **NONE**  
Inscription(s) **IGI LG803655352**  
Comments: As Grown - No indication of post-growth treatment.  
This Laboratory Grown Diamond was created by High Pressure High Temperature (HPHT) growth process.  
Type II



May 22, 2026  
IGI Report No LG803655352  
**ROUND BRILLIANT**  
Carat Weight **1.07 CARAT**  
Color Grade **D**  
Clarity Grade **VVS 1**  
Cut Grade **EXCELLENT**  
Depth **62.6%**  
Table **15%**  
Girdle **Medium (Faceted)**  
Culet **Pointed**  
Polish **EXCELLENT**  
Symmetry **EXCELLENT**  
Fluorescence **NONE**  
Inscriptions(s) **IGI LG803655352**  
Comments: As Grown - No indication of post-growth treatment.  
This Laboratory Grown Diamond was created by High Pressure High Temperature (HPHT) growth process.  
Type II

May 22, 2026  
IGI Report Number **LG803655352**  
Description **LABORATORY GROWN DIAMOND**  
Shape and Cutting Style **ROUND BRILLIANT**  
Measurements **6.50 - 6.55 X 4.09 MM**

**GRADING RESULTS**

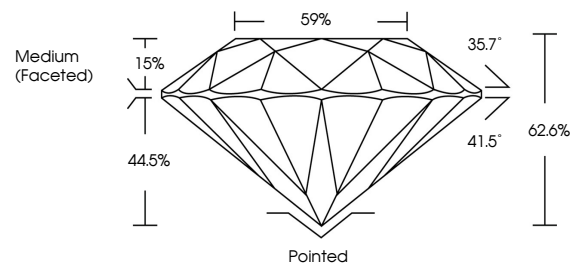
Carat Weight **1.07 CARAT**  
Color Grade **D**  
Clarity Grade **VVS 1**  
Cut Grade **EXCELLENT**

**ADDITIONAL GRADING INFORMATION**

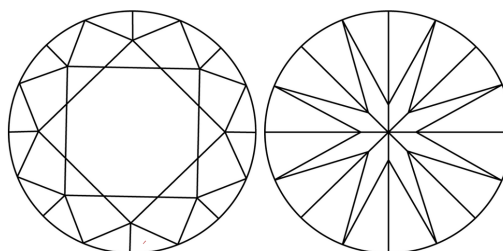
Polish **EXCELLENT**  
Symmetry **EXCELLENT**  
Fluorescence **NONE**  
Inscription(s) **IGI LG803655352**

Comments: As Grown - No indication of post-growth treatment.  
This Laboratory Grown Diamond was created by High Pressure High Temperature (HPHT) growth process.  
Type II

**PROPORTIONS**

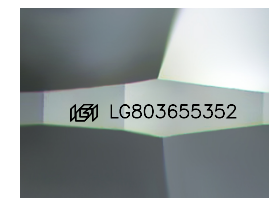


**CLARITY CHARACTERISTICS**



**KEY TO SYMBOLS**

Red symbols indicate internal characteristics.  
Green symbols indicate external characteristics.



Sample Image Used

**COLOR**

D E F G H I J Faint Very Light Light

**CLARITY**

FL	IF	VVS <sup>1-2</sup>	VS <sup>1-2</sup>	SI <sup>1-2</sup>	I <sup>1-3</sup>
Flawless	Internally Flawless	Very Very Slightly Included	Very Slightly Included	Slightly Included	Included

