



**INTERNATIONAL
GEMOLOGICAL
INSTITUTE**

ELECTRONIC COPY



May 23, 2026

IGI Report Number LG803654011
ROUND BRILLIANT
LABORATORY GROWN DIAMOND
5.72 - 5.77 X 3.55 MM

Carat Weight 0.71 CARAT
Color Grade D
Clarity Grade VVS 1
Cut Grade IDEAL
Polish EXCELLENT
Symmetry EXCELLENT
Fluorescence NONE
Inscription(s) IGI LG803654011

Comments: As Grown - No indication of post-growth treatment. This Laboratory Grown Diamond was created by High Pressure High Temperature (HPHT) growth process. Type II

LABORATORY GROWN DIAMOND REPORT

May 23, 2026
IGI Report Number **LG803654011**
Description **LABORATORY GROWN DIAMOND**
Shape and Cutting Style **ROUND BRILLIANT**
Measurements **5.72 - 5.77 X 3.55 MM**

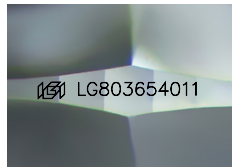
GRADING RESULTS

Carat Weight 0.71 CARAT
Color Grade D
Clarity Grade VVS 1
Cut Grade IDEAL

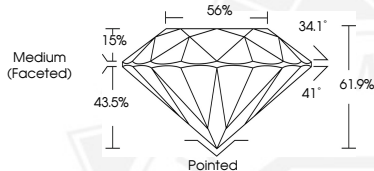
ADDITIONAL GRADING INFORMATION

Polish EXCELLENT
Symmetry EXCELLENT
Fluorescence NONE
Inscription(s) IGI LG803654011

Comments: As Grown - No indication of post-growth treatment. This Laboratory Grown Diamond was created by High Pressure High Temperature (HPHT) growth process. Type II



Sample Image Used



May 23, 2026

IGI Report Number LG803654011
ROUND BRILLIANT
LABORATORY GROWN DIAMOND
5.72 - 5.77 X 3.55 MM

Carat Weight 0.71 CARAT
Color Grade D
Clarity Grade VVS 1
Cut Grade IDEAL
Polish EXCELLENT
Symmetry EXCELLENT
Fluorescence NONE
Inscription(s) IGI LG803654011

Comments: As Grown - No indication of post-growth treatment. This Laboratory Grown Diamond was created by High Pressure High Temperature (HPHT) growth process. Type II



THIS DOCUMENT WAS PRODUCED WITH THE FOLLOWING SECURITY MEASURES: SPECIAL DOCUMENT PAPER, INK SCREENS, WATERMARK, BACKGROUND DESIGNS, HOLOGRAM AND OTHER SECURITY FEATURES NOT LISTED AND DO EXCEED DOCUMENT SECURITY INDUSTRY GUIDELINES.

For terms & conditions and to verify this report, please visit www.igi.org