



**ELECTRONIC COPY**

LG803653604  
Report verification at igi.org



May 25, 2026  
IGI Report Number **LG803653604**

Description **LABORATORY GROWN DIAMOND**

Shape and Cutting Style **HEXAGONAL STEP CUT**

Measurements **10.43 X 6.15 X 3.47 MM**

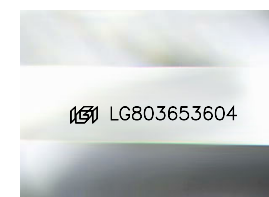
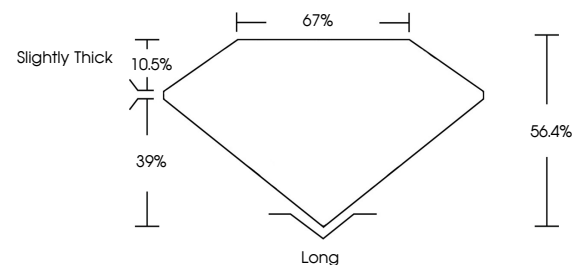
**GRADING RESULTS**

Carat Weight **1.71 CARAT**

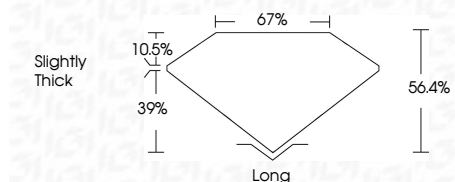
Color Grade **FANCY VIVID GREEN**

Clarity Grade **VVS 2**

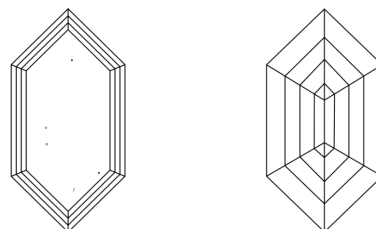
**PROPORTIONS**



Sample Image Used



**CLARITY CHARACTERISTICS**



**KEY TO SYMBOLS**

Red symbols indicate internal characteristics.  
Green symbols indicate external characteristics.

**COLOR**

D E F G H I J Faint Very Light Light

**CLARITY**

| FL       | IF                  | VVS <sup>1-2</sup>          | VS <sup>1-2</sup>      | SI <sup>1-2</sup> | I <sup>1-3</sup> |
|----------|---------------------|-----------------------------|------------------------|-------------------|------------------|
| Flawless | Internally Flawless | Very Very Slightly Included | Very Slightly Included | Slightly Included | Included         |

**ADDITIONAL GRADING INFORMATION**

Polish **EXCELLENT**

Symmetry **EXCELLENT**

Fluorescence **NONE**

Inscription(s) **IGI LG803653604**

Comments: This Laboratory Grown Diamond was created by Chemical Vapor Deposition (CVD) growth process. Indications of post-growth treatment.



|                        |                           |                    |               |                   |       |        |                |        |           |              |                |                 |
|------------------------|---------------------------|--------------------|---------------|-------------------|-------|--------|----------------|--------|-----------|--------------|----------------|-----------------|
| May 25, 2026           | IGI Report No LG803653604 | HEXAGONAL STEP CUT | 1.71 CARAT    | FANCY VIVID GREEN | VVS 2 | 67%    | Slightly Thick | Long   | EXCELLENT | EXCELLENT    | NONE           | IGI LG803653604 |
| 10.43 X 6.15 X 3.47 MM | Carat Weight              | Color Grade        | Clarity Grade | Depth             | Table | Graile | Culet          | Polish | Symmetry  | Fluorescence | Inscription(s) |                 |

Comments: This Laboratory Grown Diamond was created by Chemical Vapor Deposition (CVD) growth process. Indications of post-growth treatment.