



ELECTRONIC COPY

LG803653584
Report verification at igi.org



May 25, 2026
IGI Report Number **LG803653584**
Description **LABORATORY GROWN DIAMOND**
Shape and Cutting Style **ROUND BRILLIANT**
Measurements **8.82 - 8.85 X 5.29 MM**
GRADING RESULTS
Carat Weight **2.54 CARATS**
Color Grade **FANCY INTENSE BLUE**
Clarity Grade **VS 1**
Cut Grade **IDEAL**

May 25, 2026
IGI Report Number **LG803653584**
Description **LABORATORY GROWN DIAMOND**
Shape and Cutting Style **ROUND BRILLIANT**
Measurements **8.82 - 8.85 X 5.29 MM**

GRADING RESULTS

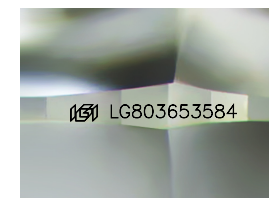
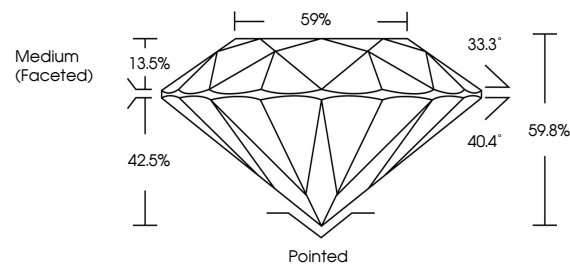
Carat Weight **2.54 CARATS**
Color Grade **FANCY INTENSE BLUE**
Clarity Grade **VS 1**
Cut Grade **IDEAL**

ADDITIONAL GRADING INFORMATION

Polish **EXCELLENT**
Symmetry **EXCELLENT**
Fluorescence **NONE**
Inscription(s) **LG803653584**

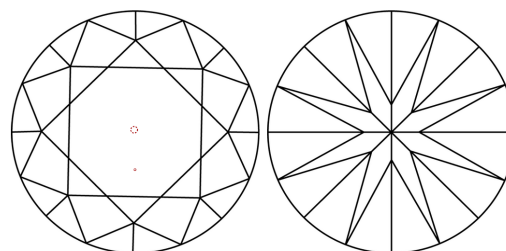
Comments: This Laboratory Grown Diamond was created by Chemical Vapor Deposition (CVD) growth process.
Indications of post-growth treatment.

PROPORTIONS



Sample Image Used

CLARITY CHARACTERISTICS



KEY TO SYMBOLS

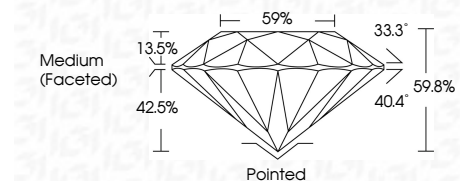
Red symbols indicate internal characteristics.
Green symbols indicate external characteristics.

COLOR

D E F G H I J Faint Very Light Light

CLARITY

FL	IF	VS ¹⁻²	VS ¹⁻²	SI ¹⁻²	I ¹⁻³
Flawless	Internally Flawless	Very Very Slightly Included	Very Slightly Included	Slightly Included	Included



ADDITIONAL GRADING INFORMATION

Polish **EXCELLENT**
Symmetry **EXCELLENT**
Fluorescence **NONE**
Inscription(s) **LG803653584**
Comments: This Laboratory Grown Diamond was created by Chemical Vapor Deposition (CVD) growth process.
Indications of post-growth treatment.



May 25, 2026
IGI Report No LG803653584
ROUND BRILLIANT
8.82 - 8.85 X 5.29 MM
2.54 CARATS
FANCY INTENSE BLUE
VS 1
IDEAL
59.8%
59%
Medium (Faceted)

Culet
Polish
Symmetry
Fluorescence
Inscriptions(s)

Pointed
EXCELLENT
EXCELLENT
NONE
NONE
IGI LG803653584

Comments: This Laboratory Grown Diamond was created by Chemical Vapor Deposition (CVD) growth process.
Indications of post-growth treatment.