



ELECTRONIC COPY

LG803651714
Report verification at igi.org



June 23, 2026
IGI Report Number LG803651714
Description LABORATORY GROWN DIAMOND
Shape and Cutting Style CUSHION MODIFIED BRILLIANT
Measurements 6.07 X 5.21 X 3.43 MM
GRADING RESULTS
Carat Weight 1.00 CARAT
Color Grade FANCY INTENSE PINK
Clarity Grade VS 2

LABORATORY GROWN DIAMOND REPORT

June 23, 2026
IGI Report Number LG803651714
Description LABORATORY GROWN DIAMOND
Shape and Cutting Style CUSHION MODIFIED BRILLIANT
Measurements 6.07 X 5.21 X 3.43 MM

GRADING RESULTS

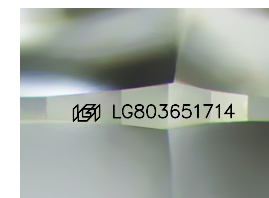
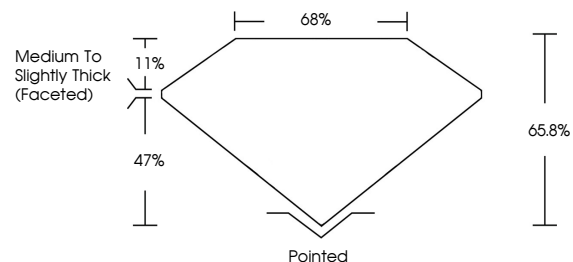
Carat Weight 1.00 CARAT
Color Grade FANCY INTENSE PINK
Clarity Grade VS 2

ADDITIONAL GRADING INFORMATION

Polish VERY GOOD
Symmetry VERY GOOD
Fluorescence SLIGHT
Inscription(s) LG803651714

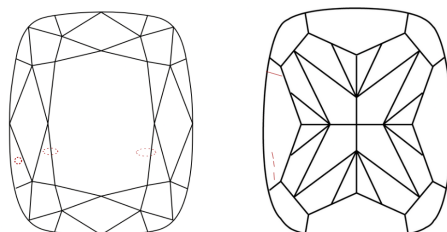
Comments: This Laboratory Grown Diamond was created by Chemical Vapor Deposition (CVD) growth process. Indications of post-growth treatment.

PROPORTIONS



Sample Image Used

CLARITY CHARACTERISTICS



KEY TO SYMBOLS

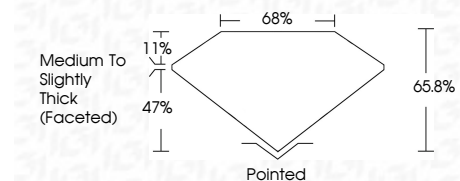
Red symbols indicate internal characteristics.
Green symbols indicate external characteristics.

COLOR

D E F G H I J Faint Very Light Light

CLARITY

FL IF VS 1-2 VS 1-2 SI 1-2 I 1-3
Flawless Internally Flawless Very Very Slightly Included Very Slightly Included Slightly Included Included



ADDITIONAL GRADING INFORMATION

Polish VERY GOOD
Symmetry VERY GOOD
Fluorescence SLIGHT
Inscription(s) LG803651714
Comments: This Laboratory Grown Diamond was created by Chemical Vapor Deposition (CVD) growth process. Indications of post-growth treatment.



June 23, 2026
IGI Report No LG803651714
CUSHION MODIFIED BRILLIANT
6.07 X 5.21 X 3.43 MM
1.00 CARAT
FANCY INTENSE PINK
VS 2
65.8%
Medium to Slightly Thick (Faceted)
Polished
VERY GOOD
VERY GOOD
SLIGHT
IGI LG803651714
Comments: This Laboratory Grown Diamond was created by Chemical Vapor Deposition (CVD) growth process. Indications of post-growth treatment.