



**ELECTRONIC COPY**

LG803650765  
Report verification at igi.org



June 25, 2026  
IGI Report Number **LG803650765**  
Description **LABORATORY GROWN DIAMOND**  
Shape and Cutting Style **CUT CORNERED  
RECTANGULAR MIXED CUT**  
Measurements **9.88 X 6.73 X 4.60 MM**  
**GRADING RESULTS**  
Carat Weight **3.01 CARATS**  
Color Grade **FANCY VIVID YELLOW**  
Clarity Grade **VS 2**

**LABORATORY GROWN DIAMOND REPORT**

June 25, 2026  
IGI Report Number **LG803650765**  
Description **LABORATORY GROWN DIAMOND**  
Shape and Cutting Style **CUT CORNERED RECTANGULAR  
MIXED CUT**  
Measurements **9.88 X 6.73 X 4.60 MM**

**GRADING RESULTS**

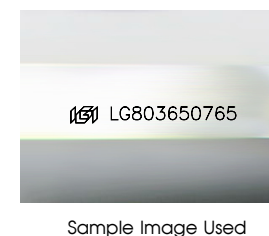
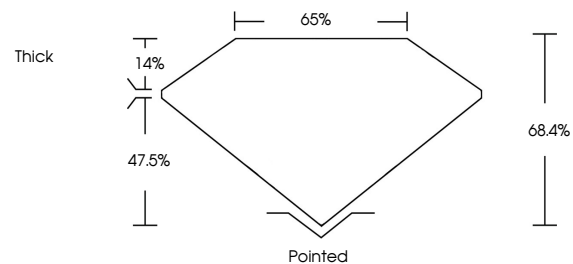
Carat Weight **3.01 CARATS**  
Color Grade **FANCY VIVID YELLOW**  
Clarity Grade **VS 2**

**ADDITIONAL GRADING INFORMATION**

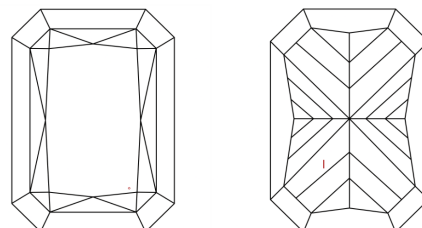
Polish **EXCELLENT**  
Symmetry **EXCELLENT**  
Fluorescence **NONE**  
Inscription(s) **IGI LG803650765**

Comments: This Laboratory Grown Diamond was created by Chemical Vapor Deposition (CVD) growth process.

**PROPORTIONS**



**CLARITY CHARACTERISTICS**



**KEY TO SYMBOLS**

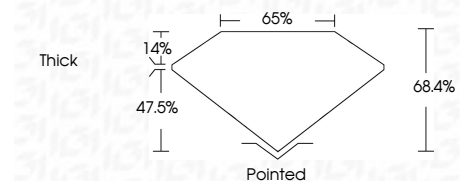
Red symbols indicate internal characteristics.  
Green symbols indicate external characteristics.

**COLOR**

D E F G H I J Faint Very Light Light

**CLARITY**

FL	IF	VS <sup>1-2</sup>	VS <sup>1-2</sup>	SI <sup>1-2</sup>	I <sup>1-3</sup>
Flawless	Internally Flawless	Very Very Slightly Included	Very Slightly Included	Slightly Included	Included



**ADDITIONAL GRADING INFORMATION**

Polish **EXCELLENT**  
Symmetry **EXCELLENT**  
Fluorescence **NONE**  
Inscription(s) **IGI LG803650765**  
Comments: This Laboratory Grown Diamond was created by Chemical Vapor Deposition (CVD) growth process.



June 25, 2026  
IGI Report No. **LG803650765**  
**CUT CORNERED RECT. MIXED CUT**  
9.88 X 6.73 X 4.60 MM  
3.01 CARATS  
FANCY VIVID YELLOW  
VS 2  
68.4%  
65%  
Thick  
Pointed  
EXCELLENT  
EXCELLENT  
NONE  
IGI LG803650765  
Comments: This Laboratory Grown Diamond was created by Chemical Vapor Deposition (CVD) growth process.