



**ELECTRONIC COPY**

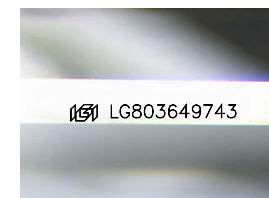
LG803649743  
Report verification at igi.org



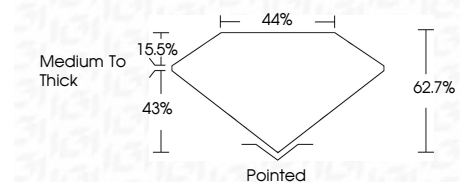
June 15, 2026  
IGI Report Number **LG803649743**  
Description **LABORATORY GROWN DIAMOND**  
Shape and Cutting Style **KITE MODIFIED BRILLIANT**  
Measurements **11.24 X 7.22 X 4.53 MM**

**GRADING RESULTS**

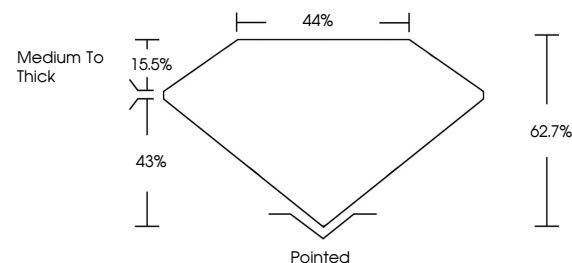
Carat Weight **1.70 CARAT**  
Color Grade **D**  
Clarity Grade **VVS 2**



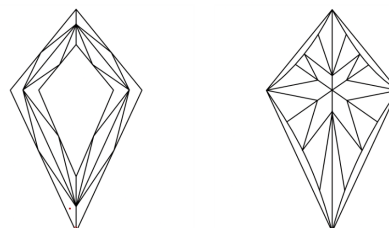
Sample Image Used



**PROPORTIONS**



**CLARITY CHARACTERISTICS**



**KEY TO SYMBOLS**

Red symbols indicate internal characteristics.  
Green symbols indicate external characteristics.

**COLOR**

D E F G H I J Faint Very Light Light

**CLARITY**

| FL       | IF                  | VVS <sup>1-2</sup>          | VS <sup>1-2</sup>      | SI <sup>1-2</sup> | I <sup>1-3</sup> |
|----------|---------------------|-----------------------------|------------------------|-------------------|------------------|
| Flawless | Internally Flawless | Very Very Slightly Included | Very Slightly Included | Slightly Included | Included         |

**ADDITIONAL GRADING INFORMATION**

Polish **EXCELLENT**  
Symmetry **EXCELLENT**  
Fluorescence **NONE**  
Inscription(s) **IGI LG803649743**  
Comments: As Grown - No indication of post-growth treatment.  
This Laboratory Grown Diamond was created by High Pressure High Temperature (HPHT) growth process.  
Type II



June 15, 2026  
IGI Report No LG803649743  
KITE MODIFIED BRILLIANT  
11.24 X 7.22 X 4.53 MM  
1.70 CARAT  
D  
VVS 2  
62.7%  
44%  
Medium to Thick  
Pointed  
EXCELLENT  
EXCELLENT  
NONE  
IGI LG803649743  
Comments: As Grown - No indication of post-growth treatment.  
This Laboratory Grown Diamond was created by High Pressure High Temperature (HPHT) growth process.  
Type II