



ELECTRONIC COPY

LG803649513
Report verification at igi.org



June 15, 2026
IGI Report Number **LG803649513**
Description **LABORATORY GROWN DIAMOND**
Shape and Cutting Style **OLD EUROPEAN CUT**
Measurements **7.96 - 7.99 X 4.77 MM**

GRADING RESULTS

Carat Weight **2.01 CARATS**
Color Grade **FANCY YELLOW**
Clarity Grade **VS 1**

June 15, 2026
IGI Report Number **LG803649513**
Description **LABORATORY GROWN DIAMOND**
Shape and Cutting Style **OLD EUROPEAN CUT**
Measurements **7.96 - 7.99 X 4.77 MM**

GRADING RESULTS

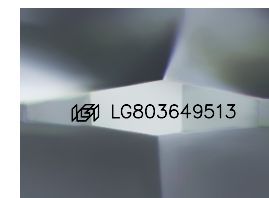
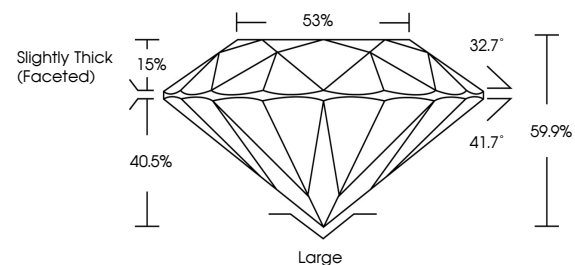
Carat Weight **2.01 CARATS**
Color Grade **FANCY YELLOW**
Clarity Grade **VS 1**

ADDITIONAL GRADING INFORMATION

Polish **EXCELLENT**
Symmetry **EXCELLENT**
Fluorescence **VERY SLIGHT**
Inscription(s) **IGI LG803649513**

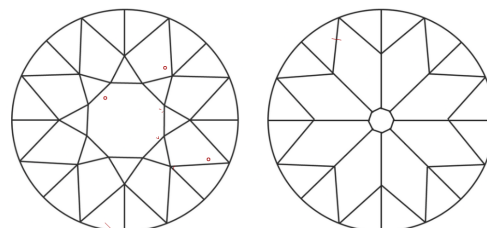
Comments: This Laboratory Grown Diamond was created by Chemical Vapor Deposition (CVD) growth process.
Indications of post-growth treatment.

PROPORTIONS



Sample Image Used

CLARITY CHARACTERISTICS



KEY TO SYMBOLS

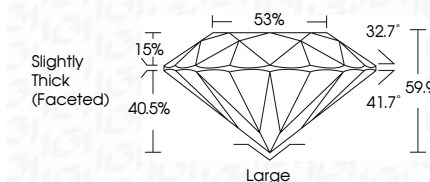
Red symbols indicate internal characteristics.
Green symbols indicate external characteristics.

COLOR

D E F G H I J Faint Very Light Light

CLARITY

FL	IF	VS ¹⁻²	VS ¹⁻²	SI ¹⁻²	I ¹⁻³
Flawless	Internally Flawless	Very Very Slightly Included	Very Slightly Included	Slightly Included	Included



ADDITIONAL GRADING INFORMATION

Polish **EXCELLENT**
Symmetry **EXCELLENT**
Fluorescence **VERY SLIGHT**
Inscription(s) **IGI LG803649513**
Comments: This Laboratory Grown Diamond was created by Chemical Vapor Deposition (CVD) growth process.
Indications of post-growth treatment.



IGI



June 15, 2026
IGI Report No. **LG803649513**
OLD EUROPEAN CUT
2.01 CARATS
Carat Weight
FANCY YELLOW
Color Grade
VS 1
Clarity Grade
69%
Depth
85%
Table
Slightly Thick (Faceted)
Girdle
Large
Culet
EXCELLENT
Polish
EXCELLENT
Symmetry
VERY SLIGHT
Fluorescence
IGI LG803649513
Inscription(s)

Comments: This Laboratory Grown Diamond was created by Chemical Vapor Deposition (CVD) growth process.
Indications of post-growth treatment.