



ELECTRONIC COPY

LG803649380
Report verification at igi.org



June 12, 2026

IGI Report Number **LG803649380**

Description **LABORATORY GROWN DIAMOND**

Shape and Cutting Style **SQUARE EMERALD CUT**

Measurements **8.05 X 7.59 X 5.23 MM**

GRADING RESULTS

Carat Weight **2.95 CARATS**

Color Grade **FANCY INTENSE YELLOW**

Clarity Grade **VS 1**

June 12, 2026
IGI Report Number **LG803649380**
Description **LABORATORY GROWN DIAMOND**
Shape and Cutting Style **SQUARE EMERALD CUT**
Measurements **8.05 X 7.59 X 5.23 MM**

GRADING RESULTS

Carat Weight **2.95 CARATS**

Color Grade **FANCY INTENSE YELLOW**

Clarity Grade **VS 1**

ADDITIONAL GRADING INFORMATION

Polish **EXCELLENT**

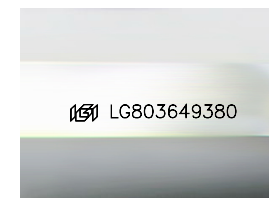
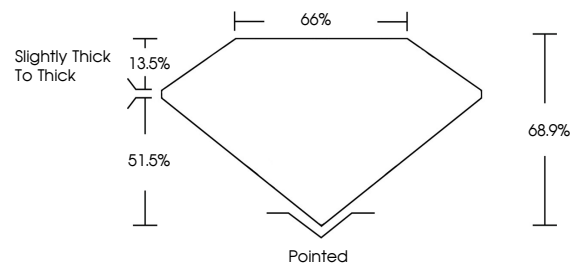
Symmetry **EXCELLENT**

Fluorescence **NONE**

Inscription(s) **IGI LG803649380**

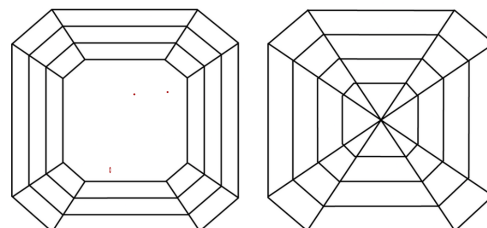
Comments: This Laboratory Grown Diamond was created by Chemical Vapor Deposition (CVD) growth process.

PROPORTIONS



Sample Image Used

CLARITY CHARACTERISTICS



KEY TO SYMBOLS

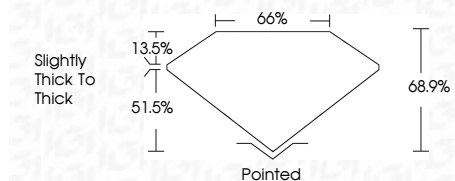
Red symbols indicate internal characteristics.
Green symbols indicate external characteristics.

COLOR

D E F G H I J Faint Very Light Light

CLARITY

| FL | IF | VS ¹⁻² | VS ¹⁻² | SI ¹⁻² | I ¹⁻³ |
|----------|---------------------|-----------------------------|------------------------|-------------------|------------------|
| Flawless | Internally Flawless | Very Very Slightly Included | Very Slightly Included | Slightly Included | Included |



ADDITIONAL GRADING INFORMATION

Polish **EXCELLENT**

Symmetry **EXCELLENT**

Fluorescence **NONE**

Inscription(s) **IGI LG803649380**

Comments: This Laboratory Grown Diamond was created by Chemical Vapor Deposition (CVD) growth process.



June 12, 2026
IGI Report No. **LG803649380**
SQUARE EMERALD CUT
Carat Weight **2.95 CARATS**
Color Grade **FANCY INTENSE YELLOW**
Clarity Grade **VS 1**
Depth **68.9%**
Table **66%**
Girdle **Slightly thick to thick**
Culet **Pointed**
Polish **EXCELLENT**
Symmetry **EXCELLENT**
Fluorescence **NONE**
Inscription(s) **IGI LG803649380**

Comments: This Laboratory Grown Diamond was created by Chemical Vapor Deposition (CVD) growth process.