



ELECTRONIC COPY

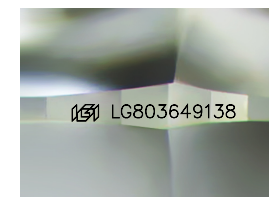
LG803649138
Report verification at igi.org



June 11, 2026
IGI Report Number **LG803649138**
Description **LABORATORY GROWN DIAMOND**
Shape and Cutting Style **OLD EUROPEAN CUT**
Measurements **8.03 - 8.09 X 4.72 MM**

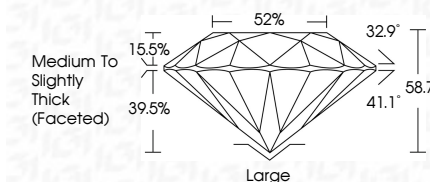
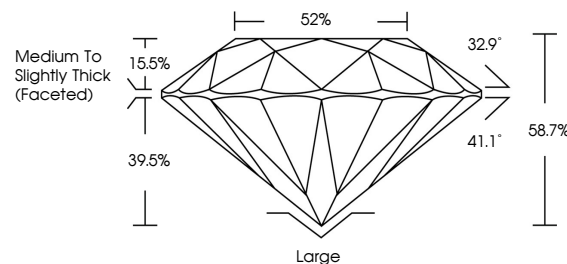
GRADING RESULTS

Carat Weight **2.02 CARATS**
Color Grade **E**
Clarity Grade **VVS 2**

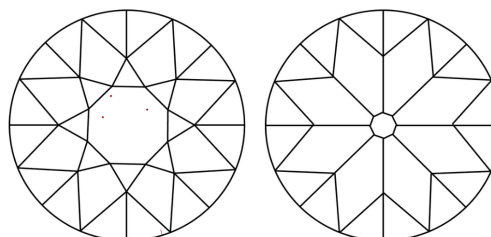


Sample Image Used

PROPORTIONS



CLARITY CHARACTERISTICS



KEY TO SYMBOLS

Red symbols indicate internal characteristics.
Green symbols indicate external characteristics.

COLOR

D E F G H I J Faint Very Light Light

CLARITY

FL	IF	VVS ¹⁻²	VS ¹⁻²	SI ¹⁻²	I ¹⁻³
Flawless	Internally Flawless	Very Very Slightly Included	Very Slightly Included	Slightly Included	Included

ADDITIONAL GRADING INFORMATION

Polish **EXCELLENT**
Symmetry **EXCELLENT**
Fluorescence **NONE**
Inscription(s) **IGI LG803649138**
Comments: This Laboratory Grown Diamond was created by Chemical Vapor Deposition (CVD) growth process. Type IIa



IGI



June 11, 2026
IGI Report No. LG803649138
OLD EUROPEAN CUT
8.03 - 8.09 X 4.72 MM
Carat Weight 2.02 CARATS
Color Grade E
Clarity Grade VVS 2
Depth 58.7%
Table 82%
Girdle Medium to Slightly Thick (Faceted)
Culet Large
Polish EXCELLENT
Symmetry EXCELLENT
Fluorescence NONE
Inscription(s) IGI LG803649138
Comments: This Laboratory Grown Diamond was created by Chemical Vapor Deposition (CVD) growth process. Type IIa