



ELECTRONIC COPY

LG803648791
Report verification at igi.org



June 4, 2026
IGI Report Number LG803648791
Description LABORATORY GROWN DIAMOND
Shape and Cutting Style ROUND BRILLIANT
Measurements 7.48 - 7.55 X 4.50 MM
GRADING RESULTS
Carat Weight 1.55 CARAT
Color Grade FANCY INTENSE BLUE
Clarity Grade VVS 2
Cut Grade IDEAL

June 4, 2026
IGI Report Number LG803648791
Description LABORATORY GROWN DIAMOND
Shape and Cutting Style ROUND BRILLIANT
Measurements 7.48 - 7.55 X 4.50 MM

GRADING RESULTS

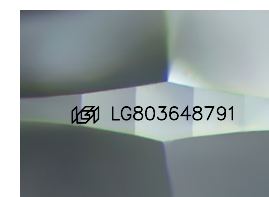
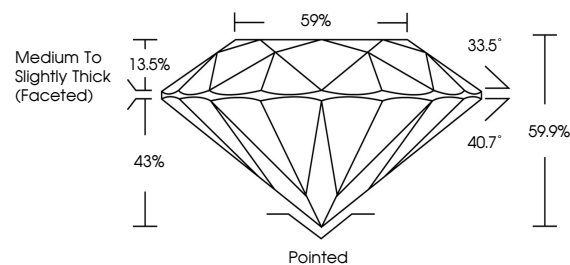
Carat Weight 1.55 CARAT
Color Grade FANCY INTENSE BLUE
Clarity Grade VVS 2
Cut Grade IDEAL

ADDITIONAL GRADING INFORMATION

Polish EXCELLENT
Symmetry EXCELLENT
Fluorescence NONE
Inscription(s) IGI LG803648791

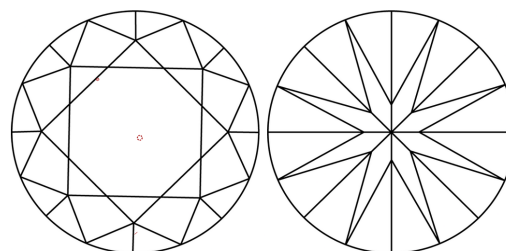
Comments: This Laboratory Grown Diamond was created by High Pressure High Temperature (HPHT) growth process.
Indications of post-growth treatment.

PROPORTIONS



Sample Image Used

CLARITY CHARACTERISTICS



KEY TO SYMBOLS

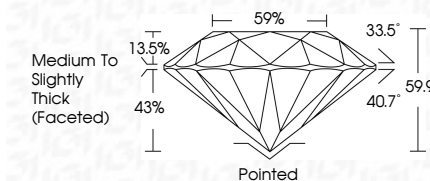
Red symbols indicate internal characteristics.
Green symbols indicate external characteristics.

COLOR

D E F G H I J Faint Very Light Light

CLARITY

Table with columns: FL, IF, VS 1-2, VS 1-2, SI 1-2, I 1-3 and corresponding descriptions: Flawless, Internally Flawless, Very Very Slightly Included, Very Slightly Included, Slightly Included, Included



ADDITIONAL GRADING INFORMATION

Polish EXCELLENT
Symmetry EXCELLENT
Fluorescence NONE
Inscription(s) IGI LG803648791
Comments: This Laboratory Grown Diamond was created by High Pressure High Temperature (HPHT) growth process.
Indications of post-growth treatment.



June 4, 2026
IGI Report No LG803648791
ROUND BRILLIANT
7.48 - 7.55 X 4.50 MM
1.55 CARAT
FANCY INTENSE BLUE
VVS 2
IDEAL
59.9%
Medium To Slightly Thick (Faceted)
Pointed
EXCELLENT
EXCELLENT
NONE
IGI LG803648791
Comments: This Laboratory Grown Diamond was created by High Pressure High Temperature (HPHT) growth process.
Indications of post-growth treatment.