



ELECTRONIC COPY

LG803648489
Report verification at igi.org

LABORATORY GROWN DIAMOND REPORT

June 2, 2026
IGI Report Number **LG803648489**
Description **LABORATORY GROWN DIAMOND**
Shape and Cutting Style **ROUND BRILLIANT**
Measurements **8.04 - 8.09 X 4.99 MM**

GRADING RESULTS

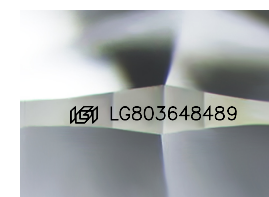
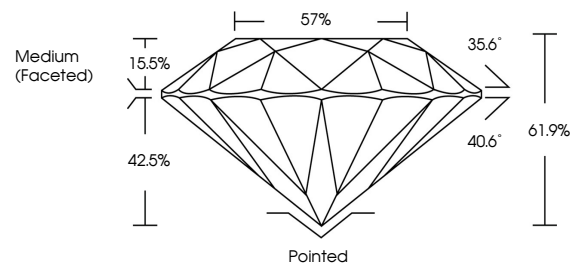
Carat Weight **2.01 CARATS**
Color Grade **LIGHT YELLOW**
Clarity Grade **VS 2**
Cut Grade **IDEAL**

ADDITIONAL GRADING INFORMATION

Polish **EXCELLENT**
Symmetry **EXCELLENT**
Fluorescence **VERY SLIGHT**
Inscription(s) **LG803648489**

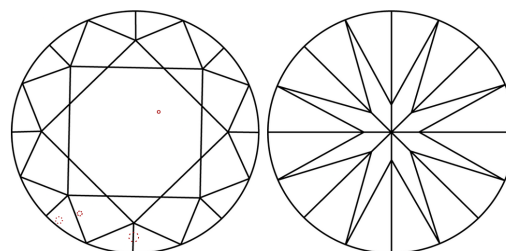
Comments: This Laboratory Grown Diamond was created by Chemical Vapor Deposition (CVD) growth process.
Indications of post-growth treatment.

PROPORTIONS



Sample Image Used

CLARITY CHARACTERISTICS



KEY TO SYMBOLS

Red symbols indicate internal characteristics.
Green symbols indicate external characteristics.

COLOR

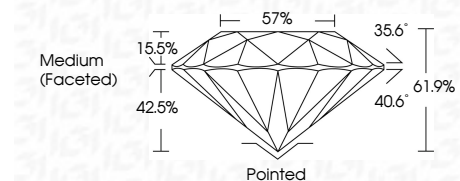
D E F G H I J Faint Very Light Light

CLARITY

FL	IF	VS ¹⁻²	VS ¹⁻²	SI ¹⁻²	I ¹⁻³
Flawless	Internally Flawless	Very Very Slightly Included	Very Slightly Included	Slightly Included	Included



June 2, 2026
IGI Report Number **LG803648489**
Description **LABORATORY GROWN DIAMOND**
Shape and Cutting Style **ROUND BRILLIANT**
Measurements **8.04 - 8.09 X 4.99 MM**
GRADING RESULTS
Carat Weight **2.01 CARATS**
Color Grade **LIGHT YELLOW**
Clarity Grade **VS 2**
Cut Grade **IDEAL**



ADDITIONAL GRADING INFORMATION

Polish **EXCELLENT**
Symmetry **EXCELLENT**
Fluorescence **VERY SLIGHT**
Inscription(s) **LG803648489**
Comments: This Laboratory Grown Diamond was created by Chemical Vapor Deposition (CVD) growth process.
Indications of post-growth treatment.



June 2, 2026
IGI Report No. LG803648489
ROUND BRILLIANT

2.01 CARATS
8.04 - 8.09 X 4.99 MM
LIGHT YELLOW
Color Grade
VS 2
Clarity Grade
IDEAL
Depth 61.9%
Table 57%
Girdle Medium (Faceted)

Pointed
EXCELLENT
EXCELLENT
VERY SLIGHT
Inscriptions(s) IGI LG803648489

Comments: This Laboratory Grown Diamond was created by Chemical Vapor Deposition (CVD) growth process.
Indications of post-growth treatment.