



**ELECTRONIC COPY**

LG803647901  
Report verification at igi.org



June 15, 2026  
IGI Report Number **LG803647901**  
Description **LABORATORY GROWN DIAMOND**  
Shape and Cutting Style **CUSHION MODIFIED BRILLIANT**  
Measurements **12.12 X 9.08 X 5.42 MM**  
**GRADING RESULTS**  
Carat Weight **5.01 CARATS**  
Color Grade **FANCY INTENSE PINK**  
Clarity Grade **VS 2**

**LABORATORY GROWN DIAMOND REPORT**

June 15, 2026  
IGI Report Number **LG803647901**  
Description **LABORATORY GROWN DIAMOND**  
Shape and Cutting Style **CUSHION MODIFIED BRILLIANT**  
Measurements **12.12 X 9.08 X 5.42 MM**

**GRADING RESULTS**

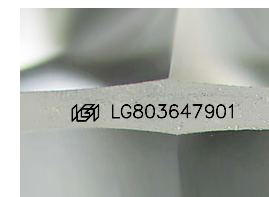
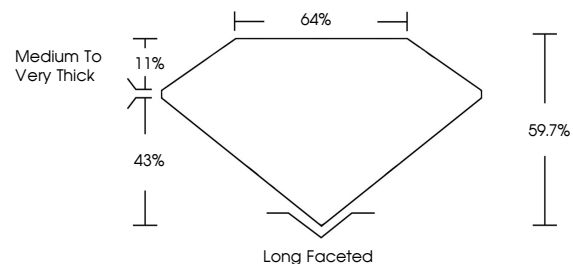
Carat Weight **5.01 CARATS**  
Color Grade **FANCY INTENSE PINK**  
Clarity Grade **VS 2**

**ADDITIONAL GRADING INFORMATION**

Polish **VERY GOOD**  
Symmetry **VERY GOOD**  
Fluorescence **SLIGHT**  
Inscription(s) **IGI LG803647901**

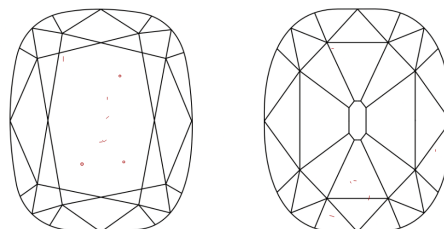
Comments: This Laboratory Grown Diamond was created by Chemical Vapor Deposition (CVD) growth process.  
Indications of post-growth treatment.

**PROPORTIONS**



Sample Image Used

**CLARITY CHARACTERISTICS**



**KEY TO SYMBOLS**

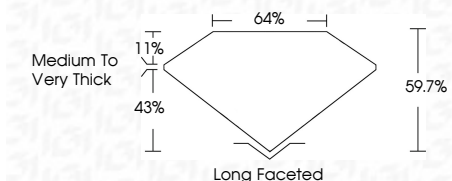
Red symbols indicate internal characteristics.  
Green symbols indicate external characteristics.

**COLOR**

D E F G H I J Faint Very Light Light

**CLARITY**

FL	IF	VS <sup>1-2</sup>	VS <sup>1-2</sup>	SI <sup>1-2</sup>	I <sup>1-3</sup>
Flawless	Internally Flawless	Very Very Slightly Included	Very Slightly Included	Slightly Included	Included



**ADDITIONAL GRADING INFORMATION**

Polish **VERY GOOD**  
Symmetry **VERY GOOD**  
Fluorescence **SLIGHT**  
Inscription(s) **IGI LG803647901**  
Comments: This Laboratory Grown Diamond was created by Chemical Vapor Deposition (CVD) growth process.  
Indications of post-growth treatment.



June 15, 2026  
IGI Report No. LG803647901  
CUSHION MODIFIED BRILLIANT  
12.12 X 9.08 X 5.42 MM  
5.01 CARATS  
FANCY INTENSE PINK  
VS 2  
64%  
43%  
59.7%  
Medium to Very Thick  
Long Faceted  
VERY GOOD  
VERY GOOD  
SLIGHT  
IGI LG803647901

Comments: This Laboratory Grown Diamond was created by Chemical Vapor Deposition (CVD) growth process.  
Indications of post-growth treatment.