



ELECTRONIC COPY

LG803647900
Report verification at igi.org



June 15, 2026
IGI Report Number **LG803647900**
Description **LABORATORY GROWN DIAMOND**
Shape and Cutting Style **EMERALD CUT**
Measurements **10.60 X 6.73 X 4.10 MM**
GRADING RESULTS
Carat Weight **3.06 CARATS**
Color Grade **FANCY VIVID GREEN**
Clarity Grade **SI 1**

June 15, 2026
IGI Report Number **LG803647900**
Description **LABORATORY GROWN DIAMOND**
Shape and Cutting Style **EMERALD CUT**
Measurements **10.60 X 6.73 X 4.10 MM**

GRADING RESULTS

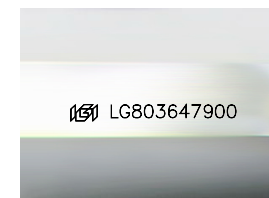
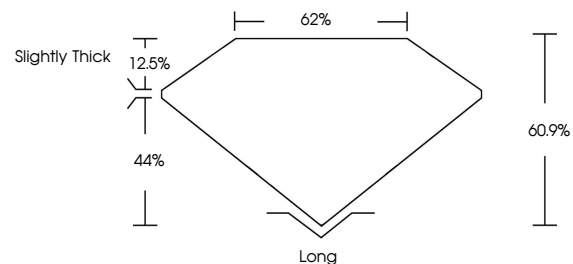
Carat Weight **3.06 CARATS**
Color Grade **FANCY VIVID GREEN**
Clarity Grade **SI 1**

ADDITIONAL GRADING INFORMATION

Polish **VERY GOOD**
Symmetry **EXCELLENT**
Fluorescence **VERY SLIGHT**
Inscription(s) **IGI LG803647900**

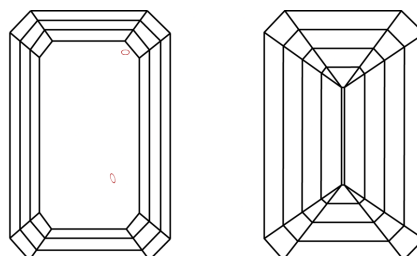
Comments: This Laboratory Grown Diamond was created by Chemical Vapor Deposition (CVD) growth process.
Indications of post-growth treatment.

PROPORTIONS



Sample Image Used

CLARITY CHARACTERISTICS



KEY TO SYMBOLS

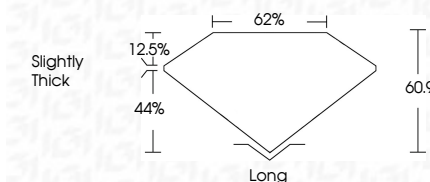
Red symbols indicate internal characteristics.
Green symbols indicate external characteristics.

COLOR

D E F G H I J Faint Very Light Light

CLARITY

FL	IF	VS ¹⁻²	VS ¹⁻²	SI ¹⁻²	I ¹⁻³
Flawless	Internally Flawless	Very Very Slightly Included	Very Slightly Included	Slightly Included	Included



ADDITIONAL GRADING INFORMATION

Polish **VERY GOOD**
Symmetry **EXCELLENT**
Fluorescence **VERY SLIGHT**
Inscription(s) **IGI LG803647900**
Comments: This Laboratory Grown Diamond was created by Chemical Vapor Deposition (CVD) growth process.
Indications of post-growth treatment.



IGI



June 15, 2026
IGI Report No. **LG803647900**
EMERALD CUT
3.06 CARATS
Carat Weight **FANCY VIVID GREEN**
Color Grade **SI 1**
Depth **60.9%**
Table **62%**
Girdle **Slightly Thick**
Culet **Long**
Polish **VERY GOOD**
Symmetry **EXCELLENT**
Fluorescence **VERY SLIGHT**
Inscription(s) **IGI LG803647900**
Comments: This Laboratory Grown Diamond was created by Chemical Vapor Deposition (CVD) growth process.
Indications of post-growth treatment.