



ELECTRONIC COPY

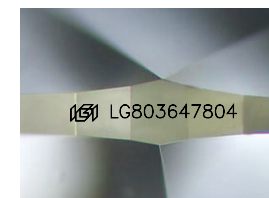
LG803647804
Report verification at igi.org



June 12, 2026
IGI Report Number **LG803647804**
Description **LABORATORY GROWN DIAMOND**
Shape and Cutting Style **OVAL MODIFIED BRILLIANT**
Measurements **11.91 X 8.51 X 5.13 MM**

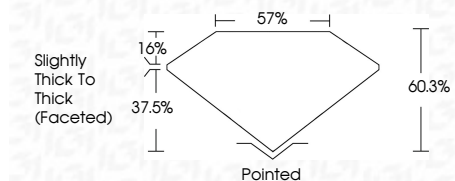
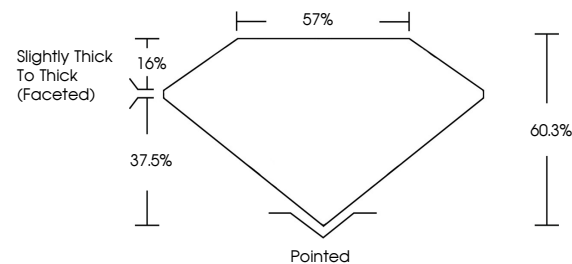
GRADING RESULTS

Carat Weight **4.02 CARATS**
Color Grade **FANCY VIVID PINK**
Clarity Grade **VS 2**

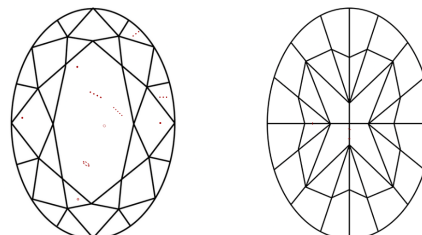


Sample Image Used

PROPORTIONS



CLARITY CHARACTERISTICS



KEY TO SYMBOLS

Red symbols indicate internal characteristics.
Green symbols indicate external characteristics.

COLOR

D E F G H I J Faint Very Light Light

CLARITY

FL	IF	VS ¹⁻²	VS ¹⁻²	SI ¹⁻²	I ¹⁻³
Flawless	Internally Flawless	Very Very Slightly Included	Very Slightly Included	Slightly Included	Included

ADDITIONAL GRADING INFORMATION

Polish **EXCELLENT**
Symmetry **EXCELLENT**
Fluorescence **SLIGHT**

Inscription(s) **IGI LG803647804**

Comments: This Laboratory Grown Diamond was created by Chemical Vapor Deposition (CVD) growth process. Indications of post-growth treatment.



IGI

June 12, 2026
IGI Report No **LG803647804**
OVAL MODIFIED BRILLIANT
11.91 X 8.51 X 5.13 MM
4.02 CARATS
FANCY VIVID PINK
VS 2
60.3%
57%
Slightly Thick To Thick (Faceted)
Pointed
EXCELLENT
EXCELLENT
SLIGHT
IGI LG803647804

Comments: This Laboratory Grown Diamond was created by Chemical Vapor Deposition (CVD) growth process. Indications of post-growth treatment.