



**ELECTRONIC COPY**

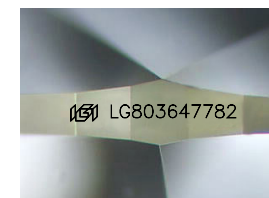
LG803647782  
Report verification at igi.org



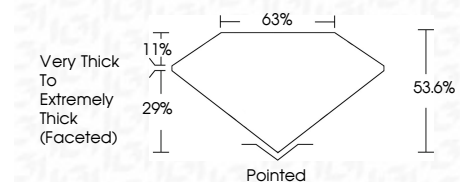
June 12, 2026  
IGI Report Number **LG803647782**  
Description **LABORATORY GROWN DIAMOND**  
Shape and Cutting Style **HEART MODIFIED BRILLIANT**  
Measurements **9.65 X 11.33 X 6.07 MM**

**GRADING RESULTS**

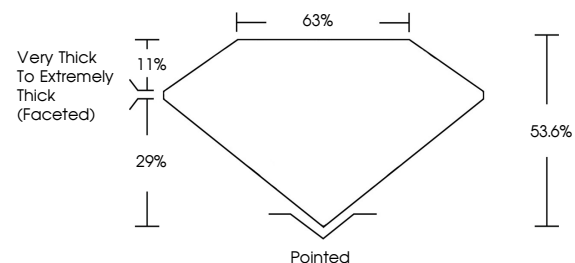
Carat Weight **5.01 CARATS**  
Color Grade **FANCY VIVID PINK**  
Clarity Grade **VS 1**



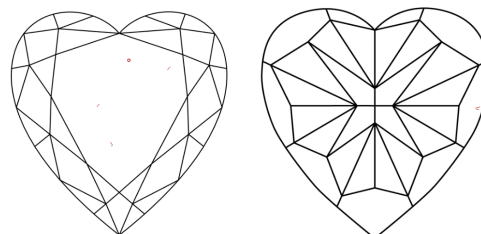
Sample Image Used



**PROPORTIONS**



**CLARITY CHARACTERISTICS**



**KEY TO SYMBOLS**

Red symbols indicate internal characteristics.  
Green symbols indicate external characteristics.

**COLOR**

D E F G H I J Faint Very Light Light

**CLARITY**

FL	IF	VS <sup>1-2</sup>	VS <sup>1-2</sup>	SI <sup>1-2</sup>	I <sup>1-3</sup>
Flawless	Internally Flawless	Very Very Slightly Included	Very Slightly Included	Slightly Included	Included

**ADDITIONAL GRADING INFORMATION**

Polish **EXCELLENT**  
Symmetry **EXCELLENT**  
Fluorescence **STRONG**  
Inscription(s) **IGI LG803647782**  
Comments: This Laboratory Grown Diamond was created by Chemical Vapor Deposition (CVD) growth process. Indications of post-growth treatment.



**IGI**



June 12, 2026  
IGI Report No. **LG803647782**  
**HEART MODIFIED BRILLIANT**  
9.65 X 11.33 X 6.07 MM  
5.01 CARATS  
FANCY VIVID PINK  
VS 1  
63.6%  
29%  
11%  
Very Thick to Extremely Thick (Faceted)  
Pointed  
EXCELLENT  
EXCELLENT  
STRONG  
IGI LG803647782

Comments: This Laboratory Grown Diamond was created by Chemical Vapor Deposition (CVD) growth process. Indications of post-growth treatment.