



ELECTRONIC COPY

LG803647612
Report verification at igi.org



June 9, 2026

IGI Report Number **LG803647612**

Description **LABORATORY GROWN DIAMOND**

Shape and Cutting Style **SQUARE EMERALD CUT**

Measurements **8.09 X 7.89 X 5.27 MM**

GRADING RESULTS

Carat Weight **3.01 CARATS**

Color Grade **FANCY VIVID PINK**

Clarity Grade **VS 2**

June 9, 2026
IGI Report Number **LG803647612**
Description **LABORATORY GROWN DIAMOND**
Shape and Cutting Style **SQUARE EMERALD CUT**
Measurements **8.09 X 7.89 X 5.27 MM**

GRADING RESULTS

Carat Weight **3.01 CARATS**

Color Grade **FANCY VIVID PINK**

Clarity Grade **VS 2**

ADDITIONAL GRADING INFORMATION

Polish **EXCELLENT**

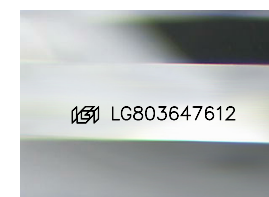
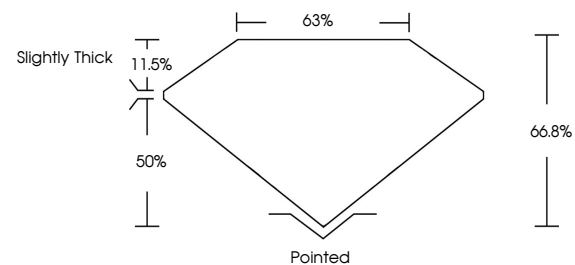
Symmetry **EXCELLENT**

Fluorescence **STRONG**

Inscription(s) **IGI LG803647612**

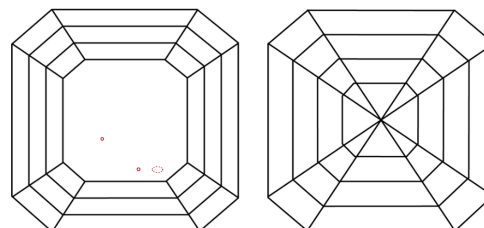
Comments: This Laboratory Grown Diamond was created by Chemical Vapor Deposition (CVD) growth process.
Indications of post-growth treatment.

PROPORTIONS



Sample Image Used

CLARITY CHARACTERISTICS



KEY TO SYMBOLS

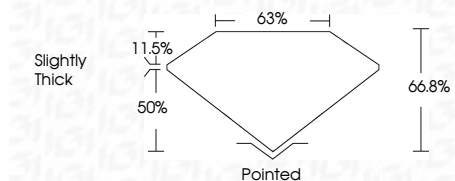
Red symbols indicate internal characteristics.
Green symbols indicate external characteristics.

COLOR

D E F G H I J Faint Very Light Light

CLARITY

FL	IF	VS ¹⁻²	VS ¹⁻²	SI ¹⁻²	I ¹⁻³
Flawless	Internally Flawless	Very Very Slightly Included	Very Slightly Included	Slightly Included	Included



ADDITIONAL GRADING INFORMATION

Polish **EXCELLENT**

Symmetry **EXCELLENT**

Fluorescence **STRONG**

Inscription(s) **IGI LG803647612**

Comments: This Laboratory Grown Diamond was created by Chemical Vapor Deposition (CVD) growth process.
Indications of post-growth treatment.



June 9, 2026
IGI Report No LG803647612
SQUARE EMERALD CUT
3.01 CARATS
Carat Weight
Color Grade **FANCY VIVID PINK**
Clarity Grade **VS 2**
Depth **66.8%**
Table **63%**
Girdle **Slightly Thick**
Culet **Pointed**
Polish **EXCELLENT**
Symmetry **EXCELLENT**
Fluorescence **STRONG**
Inscription(s) **IGI LG803647612**

Comments: This Laboratory Grown Diamond was created by Chemical Vapor Deposition (CVD) growth process.
Indications of post-growth treatment.