



ELECTRONIC COPY

LG803647406
Report verification at igi.org



June 4, 2026

IGI Report Number **LG803647406**

Description **LABORATORY GROWN DIAMOND**

Shape and Cutting Style **PEAR ROSE CUT**

Measurements **15.14 X 9.09 X 3.00 MM**

GRADING RESULTS

Carat Weight **3.23 CARATS**

Color Grade **E**

Clarity Grade **VVS 2**

June 4, 2026
IGI Report Number **LG803647406**
Description **LABORATORY GROWN DIAMOND**
Shape and Cutting Style **PEAR ROSE CUT**
Measurements **15.14 X 9.09 X 3.00 MM**

GRADING RESULTS

Carat Weight **3.23 CARATS**

Color Grade **E**

Clarity Grade **VVS 2**

ADDITIONAL GRADING INFORMATION

Polish **EXCELLENT**

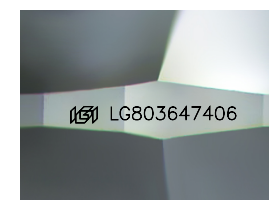
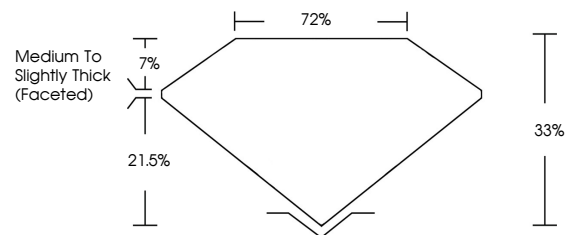
Symmetry **EXCELLENT**

Fluorescence **NONE**

Inscription(s) **IGI LG803647406**

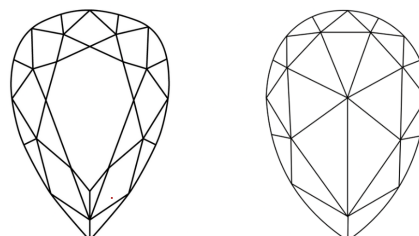
Comments: This Laboratory Grown Diamond was created by Chemical Vapor Deposition (CVD) growth process.
Type IIa

PROPORTIONS



Sample Image Used

CLARITY CHARACTERISTICS



KEY TO SYMBOLS

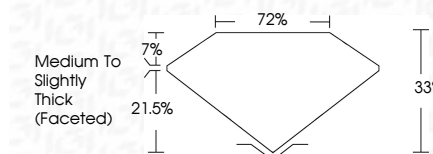
Red symbols indicate internal characteristics.
Green symbols indicate external characteristics.

COLOR

D E F G H I J Faint Very Light Light

CLARITY

FL	IF	VVS ¹⁻²	VS ¹⁻²	SI ¹⁻²	I ¹⁻³
Flawless	Internally Flawless	Very Very Slightly Included	Very Slightly Included	Slightly Included	Included



ADDITIONAL GRADING INFORMATION

Polish **EXCELLENT**

Symmetry **EXCELLENT**

Fluorescence **NONE**

Inscription(s) **IGI LG803647406**

Comments: This Laboratory Grown Diamond was created by Chemical Vapor Deposition (CVD) growth process.
Type IIa



June 4, 2026
IGI Report No. **LG803647406**
PEAR ROSE CUT

3.23 CARATS
E

15.14 X 9.09 X 3.00 MM

Carat Weight
Color Grade
Clarity Grade
Depth
Table
Girdle
Culet

3.23 CARATS
VVS 2
80%
72%
Medium to Slightly Thick (Faceted)

Polish
Symmetry
Fluorescence
Inscription(s)

EXCELLENT
EXCELLENT
NONE
IGI LG803647406

Comments: This Laboratory Grown Diamond was created by Chemical Vapor Deposition (CVD) growth process.
Type IIa