



**ELECTRONIC COPY**

LG803644953  
Report verification at igi.org



May 21, 2026  
IGI Report Number **LG803644953**  
Description **LABORATORY GROWN DIAMOND**  
Shape and Cutting Style **CUT CORNERED  
RECTANGULAR MODIFIED  
BRILLIANT**  
Measurements **9.89 X 7.19 X 4.89 MM**  
**GRADING RESULTS**  
Carat Weight **3.04 CARATS**  
Color Grade **D**  
Clarity Grade **INTERNALLY FLAWLESS**

**LABORATORY GROWN DIAMOND REPORT**

May 21, 2026  
IGI Report Number **LG803644953**  
Description **LABORATORY GROWN DIAMOND**  
Shape and Cutting Style **CUT CORNERED RECTANGULAR  
MODIFIED BRILLIANT**  
Measurements **9.89 X 7.19 X 4.89 MM**

**GRADING RESULTS**

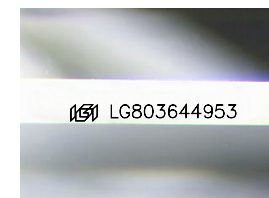
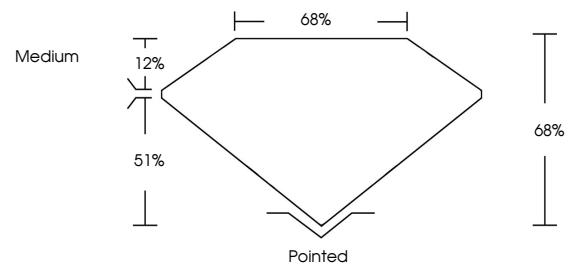
Carat Weight **3.04 CARATS**  
Color Grade **D**  
Clarity Grade **INTERNALLY FLAWLESS**

**ADDITIONAL GRADING INFORMATION**

Polish **EXCELLENT**  
Symmetry **EXCELLENT**  
Fluorescence **NONE**  
Inscription(s) **IGI LG803644953**

Comments: As Grown - No indication of post-growth treatment.  
This Laboratory Grown Diamond was created by High Pressure High Temperature (HPHT) growth process. Type II

**PROPORTIONS**



Sample Image Used

**CLARITY CHARACTERISTICS**



**KEY TO SYMBOLS**

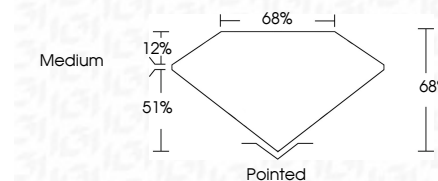
Red symbols indicate internal characteristics.  
Green symbols indicate external characteristics.

**COLOR**

D E F G H I J Faint Very Light Light

**CLARITY**

| FL       | IF                  | VS <sup>1-2</sup>           | VS <sup>1-2</sup>      | SI <sup>1-2</sup> | I <sup>1-3</sup> |
|----------|---------------------|-----------------------------|------------------------|-------------------|------------------|
| Flawless | Internally Flawless | Very Very Slightly Included | Very Slightly Included | Slightly Included | Included         |



**ADDITIONAL GRADING INFORMATION**

Polish **EXCELLENT**  
Symmetry **EXCELLENT**  
Fluorescence **NONE**  
Inscription(s) **IGI LG803644953**  
Comments: As Grown - No indication of post-growth treatment.  
This Laboratory Grown Diamond was created by High Pressure High Temperature (HPHT) growth process. Type II



**IGI**



May 21, 2026  
IGI Report No. LG803644953  
CUT CORNERED RECT. MODIFIED BRILLIANT  
9.89 X 7.19 X 4.89 MM  
3.04 CARATS  
D  
LF  
68%  
51%  
Medium  
Pointed  
EXCELLENT  
EXCELLENT  
NONE  
IGI LG803644953  
Comments: As Grown - No indication of post-growth treatment.  
This Laboratory Grown Diamond was created by High Pressure High Temperature (HPHT) growth process. Type II