



**ELECTRONIC COPY**

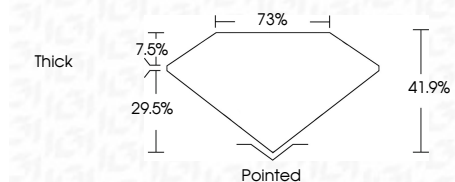
LG803644817  
Report verification at [igi.org](http://igi.org)



May 20, 2026  
IGI Report Number **LG803644817**  
Description **LABORATORY GROWN DIAMOND**  
Shape and Cutting Style **MODIFIED LOZENGE STEP CUT**  
Measurements **14.37 X 9.07 X 3.80 MM**

**GRADING RESULTS**

Carat Weight **3.12 CARATS**  
Color Grade **F**  
Clarity Grade **VVS 2**



**ADDITIONAL GRADING INFORMATION**

Polish **EXCELLENT**  
Symmetry **EXCELLENT**  
Fluorescence **NONE**  
Inscription(s) **(IGI) LG803644817**  
Comments: This Laboratory Grown Diamond was created by Chemical Vapor Deposition (CVD) growth process. Type IIa



May 20, 2026  
IGI Report No LG803644817  
MODIFIED LOZENGE STEP CUT  
14.37 X 9.07 X 3.80 MM  
3.12 CARATS  
F  
VVS 2  
41.9%  
75%  
Thick  
Pointed  
EXCELLENT  
EXCELLENT  
NONE  
(IGI) LG803644817  
Comments: This Laboratory Grown Diamond was created by Chemical Vapor Deposition (CVD) growth process. Type IIa

**LABORATORY GROWN DIAMOND REPORT**

May 20, 2026  
IGI Report Number **LG803644817**  
Description **LABORATORY GROWN DIAMOND**  
Shape and Cutting Style **MODIFIED LOZENGE STEP CUT**  
Measurements **14.37 X 9.07 X 3.80 MM**

**GRADING RESULTS**

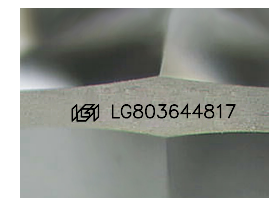
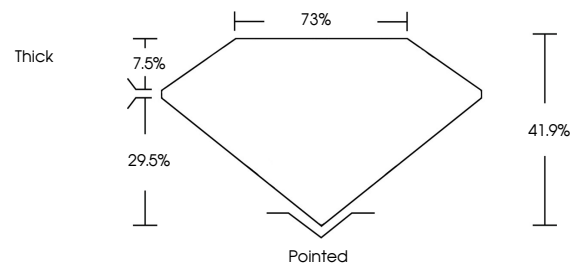
Carat Weight **3.12 CARATS**  
Color Grade **F**  
Clarity Grade **VVS 2**

**ADDITIONAL GRADING INFORMATION**

Polish **EXCELLENT**  
Symmetry **EXCELLENT**  
Fluorescence **NONE**  
Inscription(s) **(IGI) LG803644817**

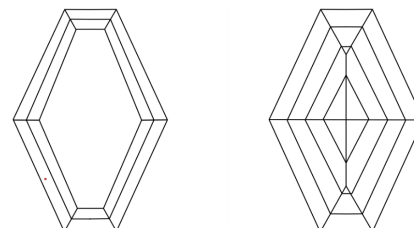
Comments: This Laboratory Grown Diamond was created by Chemical Vapor Deposition (CVD) growth process. Type IIa

**PROPORTIONS**



Sample Image Used

**CLARITY CHARACTERISTICS**



**KEY TO SYMBOLS**

Red symbols indicate internal characteristics.  
Green symbols indicate external characteristics.

**COLOR**

D E F G H I J Faint Very Light Light

**CLARITY**

FL	IF	VVS <sup>1-2</sup>	VS <sup>1-2</sup>	SI <sup>1-2</sup>	I <sup>1-3</sup>
Flawless	Internally Flawless	Very Very Slightly Included	Very Slightly Included	Slightly Included	Included

