



ELECTRONIC COPY

LG803644789 Report verification at igi.org



June 5, 2026 IGI Report Number LG803644789 Description LABORATORY GROWN DIAMOND Shape and Cutting Style HEXAGONAL MODIFIED BRILLIANT Measurements 11.73 X 6.39 X 4.30 MM GRADING RESULTS Carat Weight 2.07 CARATS Color Grade D Clarity Grade VS 2

LABORATORY GROWN DIAMOND REPORT

June 5, 2026 IGI Report Number LG803644789 Description LABORATORY GROWN DIAMOND Shape and Cutting Style HEXAGONAL MODIFIED BRILLIANT Measurements 11.73 X 6.39 X 4.30 MM

GRADING RESULTS

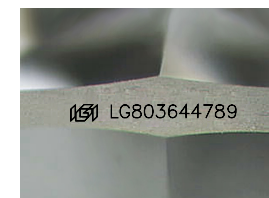
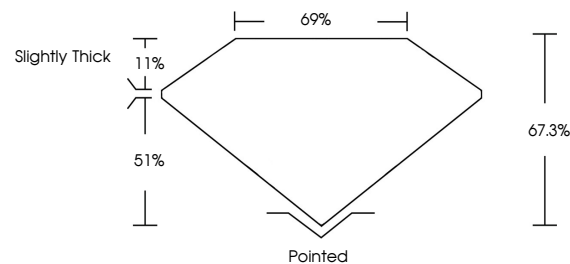
Carat Weight 2.07 CARATS Color Grade D Clarity Grade VS 2

ADDITIONAL GRADING INFORMATION

Polish EXCELLENT Symmetry EXCELLENT Fluorescence NONE Inscription(s) LG803644789

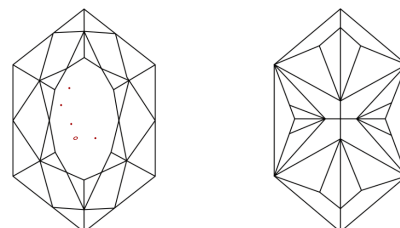
Comments: This Laboratory Grown Diamond was created by Chemical Vapor Deposition (CVD) growth process. Type IIa

PROPORTIONS



Sample Image Used

CLARITY CHARACTERISTICS



KEY TO SYMBOLS

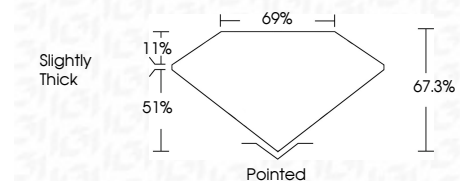
Red symbols indicate internal characteristics. Green symbols indicate external characteristics.

COLOR

D E F G H I J Faint Very Light Light

CLARITY

Table with columns: FL, IF, VS 1-2, VVS 1-2, SI 1-2, I 1-3 and corresponding descriptions: Flawless, Internally Flawless, Very Very Slightly Included, Very Slightly Included, Slightly Included, Included.



ADDITIONAL GRADING INFORMATION

Polish EXCELLENT Symmetry EXCELLENT Fluorescence NONE Inscription(s) LG803644789 Comments: This Laboratory Grown Diamond was created by Chemical Vapor Deposition (CVD) growth process. Type IIa



June 5, 2026 IGI Report No. LG803644789 HEXAGONAL MODIFIED BRILLIANT 2.07 CARATS D VS 2 67.3% 69% Slightly Thick Pointed EXCELLENT EXCELLENT NONE NONE LG803644789 Comments: This Laboratory Grown Diamond was created by Chemical Vapor Deposition (CVD) growth process. Type IIa