



ELECTRONIC COPY

LG803643891
Report verification at igi.org



May 23, 2026
IGI Report Number **LG803643891**
Description **LABORATORY GROWN DIAMOND**
Shape and Cutting Style **HEXAGONAL MODIFIED BRILLIANT**
Measurements **13.13 X 7.20 X 5.01 MM**
GRADING RESULTS
Carat Weight **3.16 CARATS**
Color Grade **D**
Clarity Grade **VS 1**

May 23, 2026
IGI Report Number **LG803643891**
Description **LABORATORY GROWN DIAMOND**
Shape and Cutting Style **HEXAGONAL MODIFIED BRILLIANT**
Measurements **13.13 X 7.20 X 5.01 MM**

GRADING RESULTS

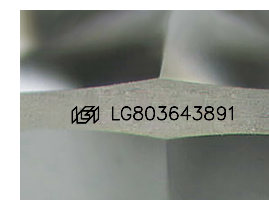
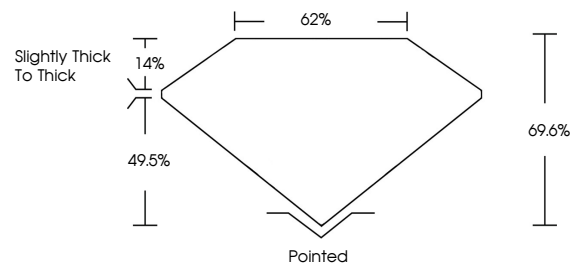
Carat Weight **3.16 CARATS**
Color Grade **D**
Clarity Grade **VS 1**

ADDITIONAL GRADING INFORMATION

Polish **EXCELLENT**
Symmetry **EXCELLENT**
Fluorescence **NONE**
Inscription(s) **IGI LG803643891**

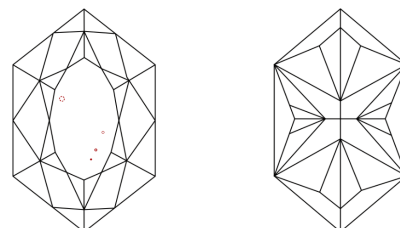
Comments: This Laboratory Grown Diamond was created by Chemical Vapor Deposition (CVD) growth process. Type IIa

PROPORTIONS



Sample Image Used

CLARITY CHARACTERISTICS



KEY TO SYMBOLS

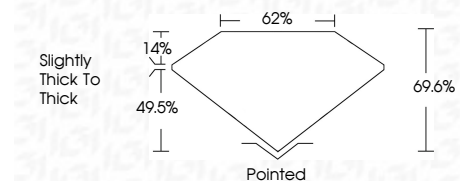
Red symbols indicate internal characteristics.
Green symbols indicate external characteristics.

COLOR

D E F G H I J Faint Very Light Light

CLARITY

FL	IF	VS ¹⁻²	VS ¹⁻²	SI ¹⁻²	I ¹⁻³
Flawless	Internally Flawless	Very Very Slightly Included	Very Slightly Included	Slightly Included	Included



ADDITIONAL GRADING INFORMATION

Polish **EXCELLENT**
Symmetry **EXCELLENT**
Fluorescence **NONE**
Inscription(s) **IGI LG803643891**
Comments: This Laboratory Grown Diamond was created by Chemical Vapor Deposition (CVD) growth process. Type IIa



May 23, 2026
IGI Report No. LG803643891
HEXAGONAL MODIFIED BRILLIANT
13.13 X 7.20 X 5.01 MM
Carat Weight **3.16 CARATS**
Color Grade **D**
Clarity Grade **VS 1**
Depth **69.6%**
Table **62%**
Girdle **Slightly thick to thick**
Culet **Pointed**
Polish **EXCELLENT**
Symmetry **EXCELLENT**
Fluorescence **NONE**
Inscription(s) **IGI LG803643891**
Comments: This Laboratory Grown Diamond was created by Chemical Vapor Deposition (CVD) growth process. Type IIa