



ELECTRONIC COPY

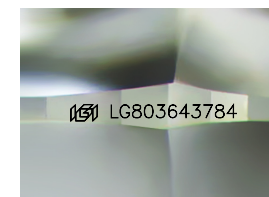
LG803643784
Report verification at igi.org



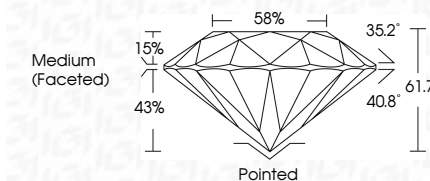
May 22, 2026
IGI Report Number **LG803643784**
Description **LABORATORY GROWN DIAMOND**
Shape and Cutting Style **ROUND BRILLIANT**
Measurements **10.37 - 10.44 X 6.42 MM**

GRADING RESULTS

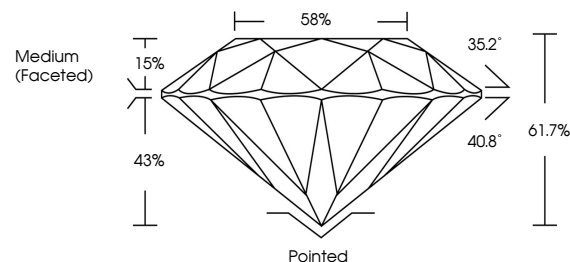
Carat Weight **4.31 CARATS**
Color Grade **E**
Clarity Grade **VVS 2**
Cut Grade **IDEAL**



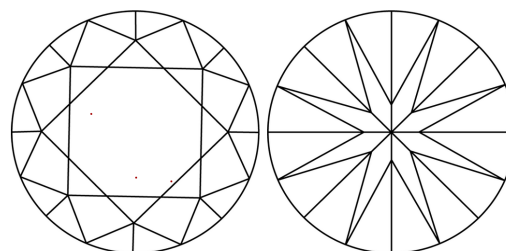
Sample Image Used



PROPORTIONS



CLARITY CHARACTERISTICS



KEY TO SYMBOLS

Red symbols indicate internal characteristics.
Green symbols indicate external characteristics.



COLOR

D E F G H I J Faint Very Light Light

CLARITY

FL	IF	VVS ¹⁻²	VS ¹⁻²	SI ¹⁻²	I ¹⁻³
Flawless	Internally Flawless	Very Very Slightly Included	Very Slightly Included	Slightly Included	Included

ADDITIONAL GRADING INFORMATION

Polish **EXCELLENT**
Symmetry **EXCELLENT**
Fluorescence **NONE**
Inscription(s) **IGI LG803643784**
Comments: HEARTS & ARROWS
This Laboratory Grown Diamond was created by Chemical Vapor Deposition (CVD) growth process. Type IIa



May 22, 2026
IGI Report No LG803643784
ROUND BRILLIANT

4.31 CARATS
E

10.37 - 10.44 X 6.42 MM

Color Grade
Clarity Grade
Depth
Table
Girdle
Medium (Faceted)

4.31 CARATS
E
VVS 2
IDEAL
61.7%
58%

Pointed
EXCELLENT
EXCELLENT
NONE
NONE

IGI LG803643784

Comments:
Hearts & Arrows
This Laboratory Grown Diamond was created by Chemical Vapor Deposition (CVD) growth process.
Type IIa