



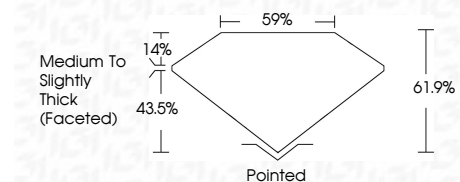
ELECTRONIC COPY

LG803643394
Report verification at igi.org



May 27, 2026
IGI Report Number **LG803643394**
Description **LABORATORY GROWN DIAMOND**
Shape and Cutting Style **MARQUISE BRILLIANT**
Measurements **17.96 X 9.00 X 5.57 MM**

GRADING RESULTS
Carat Weight **5.06 CARATS**
Color Grade **D**
Clarity Grade **VS 2**



ADDITIONAL GRADING INFORMATION
Polish **EXCELLENT**
Symmetry **EXCELLENT**
Fluorescence **NONE**
Inscription(s) **IGI LG803643394**
Comments: This Laboratory Grown Diamond was created by Chemical Vapor Deposition (CVD) growth process. Type IIa



May 27, 2026
IGI Report No. LG803643394
MARQUISE BRILLIANT
17.96 X 9.00 X 5.57 MM
5.06 CARATS
D
5.06 CARATS
D
61.9%
61.9%
Medium to Slightly Thick (Faceted)
Pointed
EXCELLENT
EXCELLENT
NONE
IGI LG803643394
Comments: This Laboratory Grown Diamond was created by Chemical Vapor Deposition (CVD) growth process. Type IIa

LABORATORY GROWN DIAMOND REPORT

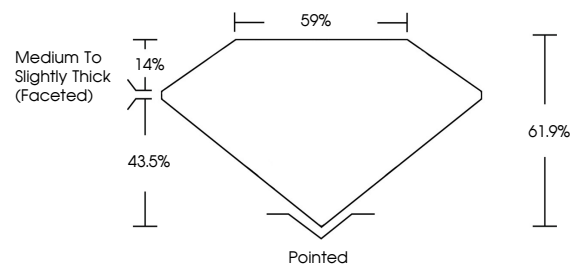
May 27, 2026
IGI Report Number **LG803643394**
Description **LABORATORY GROWN DIAMOND**
Shape and Cutting Style **MARQUISE BRILLIANT**
Measurements **17.96 X 9.00 X 5.57 MM**

GRADING RESULTS
Carat Weight **5.06 CARATS**
Color Grade **D**
Clarity Grade **VS 2**

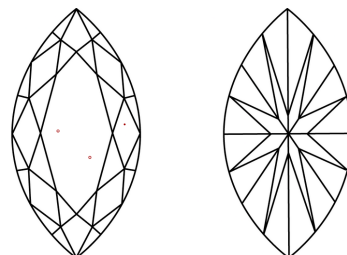
ADDITIONAL GRADING INFORMATION
Polish **EXCELLENT**
Symmetry **EXCELLENT**
Fluorescence **NONE**
Inscription(s) **IGI LG803643394**

Comments: This Laboratory Grown Diamond was created by Chemical Vapor Deposition (CVD) growth process. Type IIa

PROPORTIONS

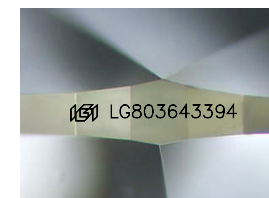


CLARITY CHARACTERISTICS



KEY TO SYMBOLS

Red symbols indicate internal characteristics.
Green symbols indicate external characteristics.



Sample Image Used

COLOR

D E F G H I J Faint Very Light Light

CLARITY

| FL | IF | VS ¹⁻² | VS ¹⁻² | SI ¹⁻² | I ¹⁻³ |
|----------|---------------------|-----------------------------|------------------------|-------------------|------------------|
| Flawless | Internally Flawless | Very Very Slightly Included | Very Slightly Included | Slightly Included | Included |

