



ELECTRONIC COPY

LABORATORY GROWN DIAMOND REPORT

May 20, 2026
IGI Report Number LG803638471
Description LABORATORY GROWN DIAMOND
Shape and Cutting Style HALF MOON MODIFIED BRILLIANT
Measurements 9.32 X 5.46 X 3.24 MM

GRADING RESULTS

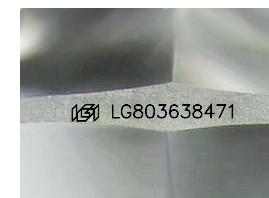
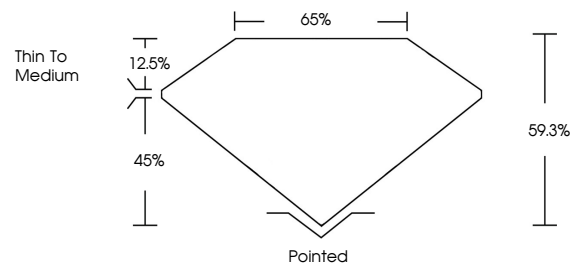
Carat Weight 1.00 CARAT
Color Grade E
Clarity Grade VS 1

ADDITIONAL GRADING INFORMATION

Polish EXCELLENT
Symmetry EXCELLENT
Fluorescence NONE
Inscription(s) IGI LG803638471

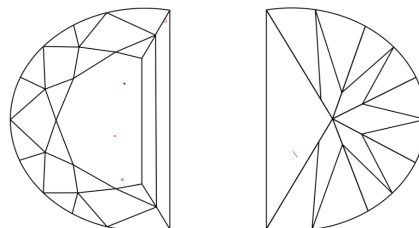
Comments: This Laboratory Grown Diamond was created by Chemical Vapor Deposition (CVD) growth process.
Type IIa

PROPORTIONS



Sample Image Used

CLARITY CHARACTERISTICS



KEY TO SYMBOLS

Red symbols indicate internal characteristics.
Green symbols indicate external characteristics.

COLOR

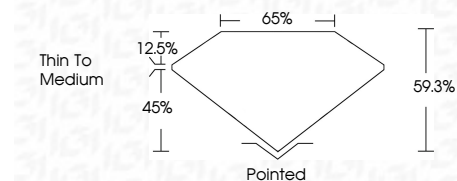
D E F G H I J Faint Very Light Light

CLARITY

FL IF VS 1-2 VS 2-3 SI 1-2 I 1-3
Flawless Internally Flawless Very Very Slightly Included Very Slightly Included Slightly Included Included



May 20, 2026
IGI Report Number LG803638471
Description LABORATORY GROWN DIAMOND
Shape and Cutting Style HALF MOON MODIFIED BRILLIANT
Measurements 9.32 X 5.46 X 3.24 MM
GRADING RESULTS
Carat Weight 1.00 CARAT
Color Grade E
Clarity Grade VS 1



ADDITIONAL GRADING INFORMATION

Polish EXCELLENT
Symmetry EXCELLENT
Fluorescence NONE
Inscription(s) IGI LG803638471
Comments: This Laboratory Grown Diamond was created by Chemical Vapor Deposition (CVD) growth process.
Type IIa



May 20, 2026
IGI Report No LG803638471
HALF MOON MODIFIED BRILLIANT
1.00 CARAT E
9.32 X 5.46 X 3.24 MM
Color Grade VS 1
Depth 60.0%
Table 45%
Girdle Thin To Medium
Culet Pointed
Polish EXCELLENT
Symmetry EXCELLENT
Fluorescence NONE
Inscription(s) IGI LG803638471
Comments: This Laboratory Grown Diamond was created by Chemical Vapor Deposition (CVD) growth process.
Type IIa