



ELECTRONIC COPY

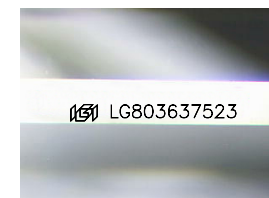
LG803637523
Report verification at igi.org



May 25, 2026
IGI Report Number **LG803637523**
Description **LABORATORY GROWN DIAMOND**

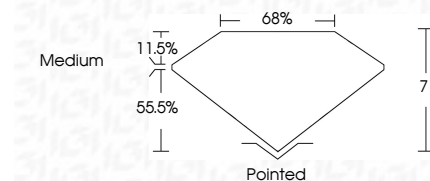
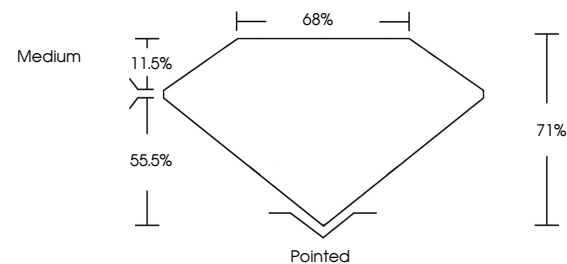
Shape and Cutting Style **PRINCESS CUT**
Measurements **7.55 X 7.41 X 5.26 MM**

GRADING RESULTS
Carat Weight **2.60 CARATS**
Color Grade **F**
Clarity Grade **VVS 2**

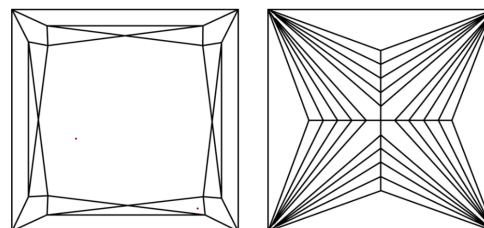


Sample Image Used

PROPORTIONS



CLARITY CHARACTERISTICS



KEY TO SYMBOLS

Red symbols indicate internal characteristics.
Green symbols indicate external characteristics.

COLOR

D E F G H I J Faint Very Light Light

CLARITY

FL	IF	VVS ¹⁻²	VS ¹⁻²	SI ¹⁻²	I ¹⁻³
Flawless	Internally Flawless	Very Very Slightly Included	Very Slightly Included	Slightly Included	Included

ADDITIONAL GRADING INFORMATION

Polish **EXCELLENT**
Symmetry **EXCELLENT**
Fluorescence **NONE**
Inscription(s) **IGI LG803637523**
Comments: This Laboratory Grown Diamond was created by Chemical Vapor Deposition (CVD) growth process. Type IIa



IGI



May 25, 2026
IGI Report No. LG803637523
PRINCESS CUT
2.60 CARATS
Color Grade **F**
Clarity Grade **VVS 2**
Depth **71%**
Table **68%**
Girdle **Medium**
Culet **Pointed**
Polish **EXCELLENT**
Symmetry **EXCELLENT**
Fluorescence **NONE**
Inscription(s) **IGI LG803637523**
Comments: This Laboratory Grown Diamond was created by Chemical Vapor Deposition (CVD) growth process. Type IIa