



**ELECTRONIC COPY**

LG803633954  
Report verification at [igi.org](http://igi.org)



May 26, 2026  
IGI Report Number **LG803633954**  
Description **LABORATORY GROWN DIAMOND**  
Shape and Cutting Style **PEAR MODIFIED BRILLIANT**  
Measurements **12.03 X 7.49 X 4.66 MM**  
**GRADING RESULTS**  
Carat Weight **3.02 CARATS**  
Color Grade **FANCY INTENSE YELLOW**  
Clarity Grade **VS 2**

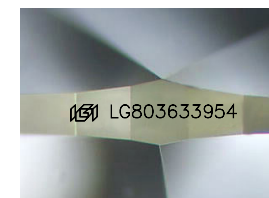
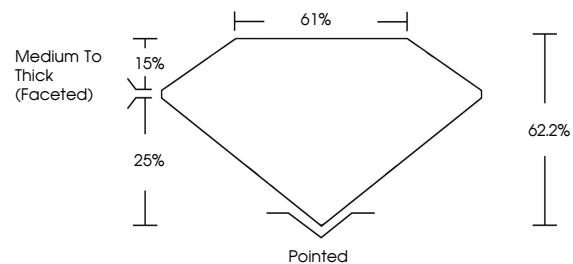
May 26, 2026  
IGI Report Number **LG803633954**  
Description **LABORATORY GROWN DIAMOND**  
Shape and Cutting Style **PEAR MODIFIED BRILLIANT**  
Measurements **12.03 X 7.49 X 4.66 MM**

**GRADING RESULTS**  
Carat Weight **3.02 CARATS**  
Color Grade **FANCY INTENSE YELLOW**  
Clarity Grade **VS 2**

**ADDITIONAL GRADING INFORMATION**  
Polish **EXCELLENT**  
Symmetry **EXCELLENT**  
Fluorescence **NONE**  
Inscription(s) **IGI LG803633954**

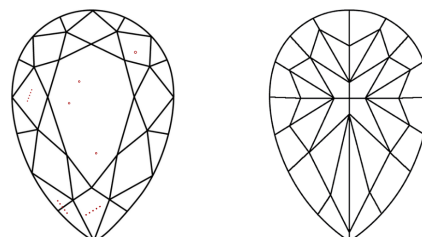
Comments: This Laboratory Grown Diamond was created by Chemical Vapor Deposition (CVD) growth process.

**PROPORTIONS**



Sample Image Used

**CLARITY CHARACTERISTICS**



**KEY TO SYMBOLS**

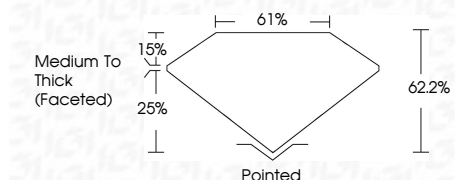
Red symbols indicate internal characteristics.  
Green symbols indicate external characteristics.

**COLOR**

D E F G H I J Faint Very Light Light

**CLARITY**

FL	IF	VS <sup>1-2</sup>	VS <sup>1-2</sup>	SI <sup>1-2</sup>	I <sup>1-3</sup>
Flawless	Internally Flawless	Very Very Slightly Included	Very Slightly Included	Slightly Included	Included



**ADDITIONAL GRADING INFORMATION**

Polish **EXCELLENT**  
Symmetry **EXCELLENT**  
Fluorescence **NONE**  
Inscription(s) **IGI LG803633954**  
Comments: This Laboratory Grown Diamond was created by Chemical Vapor Deposition (CVD) growth process.



**IGI**



May 26, 2026  
IGI Report No. **LG803633954**  
**PEAR MODIFIED BRILLIANT**  
12.03 X 7.49 X 4.66 MM  
3.02 CARATS  
Carat Weight  
Color Grade **FANCY INTENSE YELLOW**  
Clarity Grade **VS 2**  
Depth **62.2%**  
Table **61%**  
Girdle **Medium To Thick (Faceted)**  
Culet **Pointed**  
Polish **EXCELLENT**  
Symmetry **EXCELLENT**  
Fluorescence **NONE**  
Inscription(s) **IGI LG803633954**  
Comments: This Laboratory Grown Diamond was created by Chemical Vapor Deposition (CVD) growth process.