



**ELECTRONIC COPY**

LG803629909  
Report verification at igi.org



May 22, 2026  
IGI Report Number **LG803629909**  
Description **LABORATORY GROWN DIAMOND**  
Shape and Cutting Style **HEXAGONAL MODIFIED BRILLIANT**  
Measurements **8.44 X 7.33 X 5.16 MM**  
**GRADING RESULTS**  
Carat Weight **2.17 CARATS**  
Color Grade **E**  
Clarity Grade **VVS 2**

**LABORATORY GROWN DIAMOND REPORT**

May 22, 2026  
IGI Report Number **LG803629909**  
Description **LABORATORY GROWN DIAMOND**  
Shape and Cutting Style **HEXAGONAL MODIFIED BRILLIANT**  
Measurements **8.44 X 7.33 X 5.16 MM**

**GRADING RESULTS**

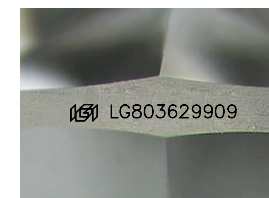
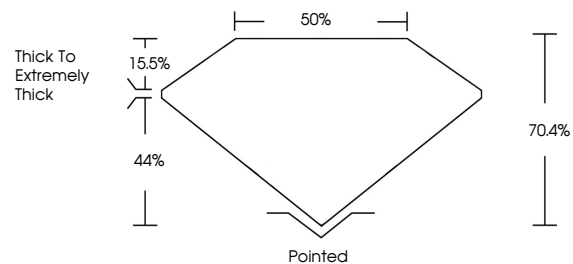
Carat Weight **2.17 CARATS**  
Color Grade **E**  
Clarity Grade **VVS 2**

**ADDITIONAL GRADING INFORMATION**

Polish **EXCELLENT**  
Symmetry **EXCELLENT**  
Fluorescence **NONE**  
Inscription(s) **IGI LG803629909**

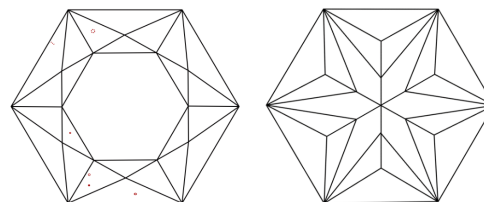
Comments: This Laboratory Grown Diamond was created by Chemical Vapor Deposition (CVD) growth process.  
Type IIa

**PROPORTIONS**



Sample Image Used

**CLARITY CHARACTERISTICS**



**KEY TO SYMBOLS**

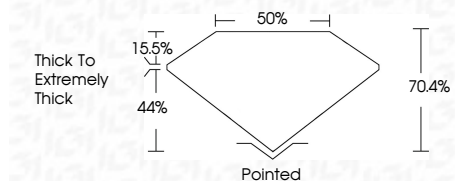
Red symbols indicate internal characteristics.  
Green symbols indicate external characteristics.

**COLOR**

D E F G H I J Faint Very Light Light

**CLARITY**

FL	IF	VVS <sup>1-2</sup>	VS <sup>1-2</sup>	SI <sup>1-2</sup>	I <sup>1-3</sup>
Flawless	Internally Flawless	Very Very Slightly Included	Very Slightly Included	Slightly Included	Included



**ADDITIONAL GRADING INFORMATION**

Polish **EXCELLENT**  
Symmetry **EXCELLENT**  
Fluorescence **NONE**  
Inscription(s) **IGI LG803629909**  
Comments: This Laboratory Grown Diamond was created by Chemical Vapor Deposition (CVD) growth process.  
Type IIa



May 22, 2026  
IGI Report No. **LG803629909**  
**HEXAGONAL MODIFIED BRILLIANT**  
**2.17 CARATS**  
E  
Carat Weight **2.17 CARATS**  
Color Grade **E**  
Clarity Grade **VVS 2**  
Depth **70.4%**  
Table **50%**  
Girdle **Thick To Extremely Thick**  
Culet **Pointed**  
Polish **EXCELLENT**  
Symmetry **EXCELLENT**  
Fluorescence **NONE**  
Inscription(s) **IGI LG803629909**  
Comments: This Laboratory Grown Diamond was created by Chemical Vapor Deposition (CVD) growth process.  
Type IIa