



ELECTRONIC COPY

LG803627946
Report verification at igi.org



June 1, 2026
IGI Report Number **LG803627946**
Description **LABORATORY GROWN DIAMOND**
Shape and Cutting Style **SQUARE CUSHION MODIFIED BRILLIANT**
Measurements **5.97 X 5.87 X 3.93 MM**
GRADING RESULTS
Carat Weight **1.08 CARAT**
Color Grade **FANCY VIVID GREEN**
Clarity Grade **VS 2**

LABORATORY GROWN DIAMOND REPORT

June 1, 2026
IGI Report Number **LG803627946**
Description **LABORATORY GROWN DIAMOND**
Shape and Cutting Style **SQUARE CUSHION MODIFIED BRILLIANT**
Measurements **5.97 X 5.87 X 3.93 MM**

GRADING RESULTS

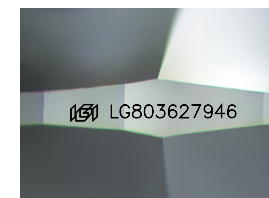
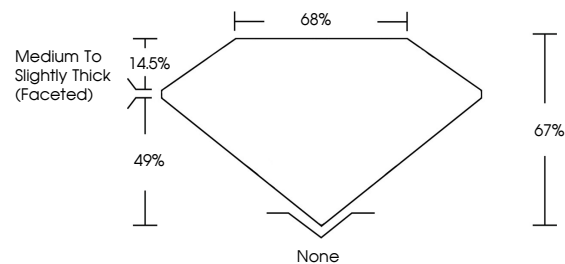
Carat Weight **1.08 CARAT**
Color Grade **FANCY VIVID GREEN**
Clarity Grade **VS 2**

ADDITIONAL GRADING INFORMATION

Polish **VERY GOOD**
Symmetry **EXCELLENT**
Fluorescence **NONE**
Inscription(s) **IGI LG803627946**

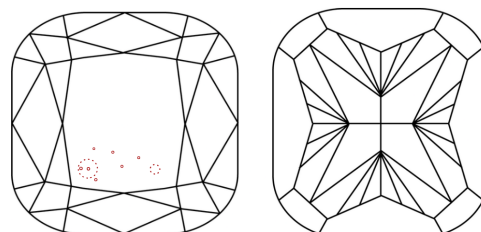
Comments: This Laboratory Grown Diamond was created by Chemical Vapor Deposition (CVD) growth process.
Indications of post-growth treatment.

PROPORTIONS



Sample Image Used

CLARITY CHARACTERISTICS



KEY TO SYMBOLS

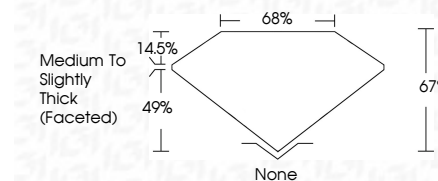
Red symbols indicate internal characteristics.
Green symbols indicate external characteristics.

COLOR

D E F G H I J Faint Very Light Light

CLARITY

FL	IF	VS ¹⁻²	VS ¹⁻²	SI ¹⁻²	I ¹⁻³
Flawless	Internally Flawless	Very Very Slightly Included	Very Slightly Included	Slightly Included	Included



ADDITIONAL GRADING INFORMATION

Polish **VERY GOOD**
Symmetry **EXCELLENT**
Fluorescence **NONE**
Inscription(s) **IGI LG803627946**
Comments: This Laboratory Grown Diamond was created by Chemical Vapor Deposition (CVD) growth process.
Indications of post-growth treatment.



June 1, 2026
IGI Report No. **LG803627946**
SQUARE CUSHION MODIFIED BRILLIANT
5.97 X 5.87 X 3.93 MM
Carat Weight **1.08 CARAT**
Color Grade **FANCY VIVID GREEN**
Clarity Grade **VS 2**
Depth **49%**
Table **14.5%**
Girdle **Medium to Slightly Thick (Faceted)**
Culet **None**
Polish **VERY GOOD**
Symmetry **EXCELLENT**
Fluorescence **NONE**
Inscription(s) **IGI LG803627946**
Comments: This Laboratory Grown Diamond was created by Chemical Vapor Deposition (CVD) growth process.
Indications of post-growth treatment.