



**ELECTRONIC COPY**

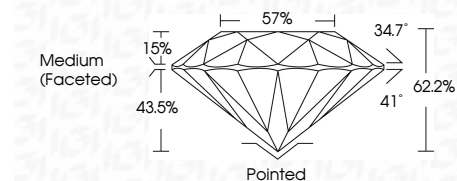
LG803627941  
Report verification at igi.org



May 29, 2026  
IGI Report Number **LG803627941**  
Description **LABORATORY GROWN DIAMOND**  
Shape and Cutting Style **ROUND BRILLIANT**  
Measurements **6.47 - 6.50 X 4.03 MM**

**GRADING RESULTS**

Carat Weight **1.04 CARAT**  
Color Grade **E**  
Clarity Grade **VVS 1**  
Cut Grade **IDEAL**

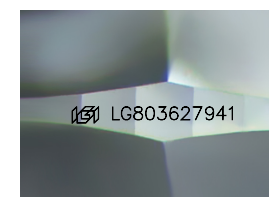


**ADDITIONAL GRADING INFORMATION**

Polish **EXCELLENT**  
Symmetry **EXCELLENT**  
Fluorescence **NONE**  
Inscription(s) **IGI LG803627941**  
Comments: HEARTS & ARROWS  
This Laboratory Grown Diamond was created by Chemical Vapor Deposition (CVD) growth process. Type IIa

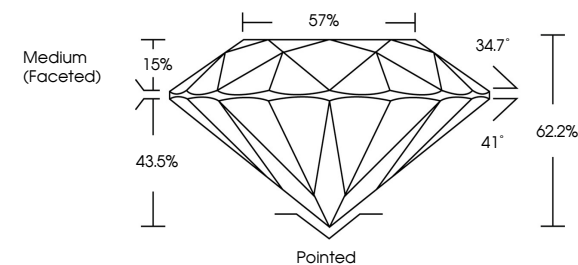


May 29, 2026  
IGI Report No. LG803627941  
**ROUND BRILLIANT**  
6.47 - 6.50 X 4.03 MM  
1.04 CARAT  
E  
VVS 1  
IDEAL  
62.2%  
57%  
Medium (Faceted)  
Pointed  
EXCELLENT  
EXCELLENT  
NONE  
IGI LG803627941  
Comments: HEARTS & ARROWS  
This Laboratory Grown Diamond was created by Chemical Vapor Deposition (CVD) growth process. Type IIa

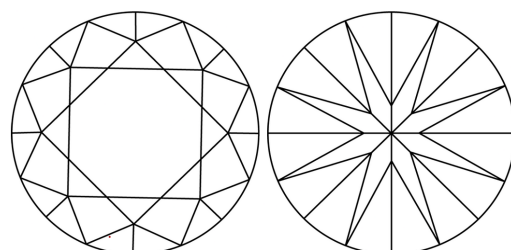


Sample Image Used

**PROPORTIONS**



**CLARITY CHARACTERISTICS**



**KEY TO SYMBOLS**

Red symbols indicate internal characteristics.  
Green symbols indicate external characteristics.



**COLOR**

D E F G H I J Faint Very Light Light

**CLARITY**

FL	IF	VVS <sup>1-2</sup>	VS <sup>1-2</sup>	SI <sup>1-2</sup>	I <sup>1-3</sup>
Flawless	Internally Flawless	Very Very Slightly Included	Very Slightly Included	Slightly Included	Included

