



ELECTRONIC COPY

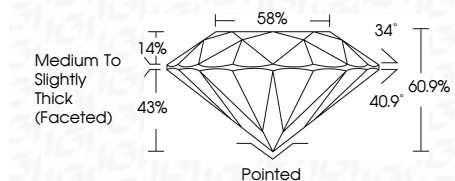
LG803627839 Report verification at igi.org



June 1, 2026 IGI Report Number LG803627839 Description LABORATORY GROWN DIAMOND Shape and Cutting Style ROUND BRILLIANT Measurements 6.59 - 6.63 X 4.02 MM

GRADING RESULTS

Carat Weight 1.08 CARAT Color Grade E Clarity Grade VVS 2 Cut Grade IDEAL



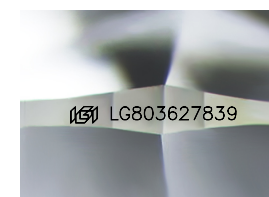
ADDITIONAL GRADING INFORMATION

Polish EXCELLENT Symmetry EXCELLENT Fluorescence NONE Inscription(s) LG803627839 Comments: HEARTS & ARROWS This Laboratory Grown Diamond was created by Chemical Vapor Deposition (CVD) growth process. Type IIa



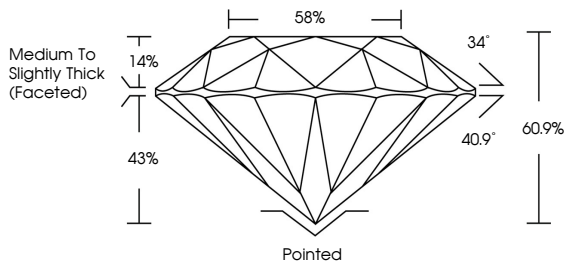
June 1, 2026 IGI Report No LG803627839 ROUND BRILLIANT 6.59 - 6.63 X 4.02 MM 1.08 CARAT E VVS 2 IDEAL 60.9% 58% Medium To Slightly Thick (Faceted) Pointed EXCELLENT EXCELLENT NONE LG803627839

Comments: HEARTS & ARROWS This Laboratory Grown Diamond was created by Chemical Vapor Deposition (CVD) growth process. Type IIa

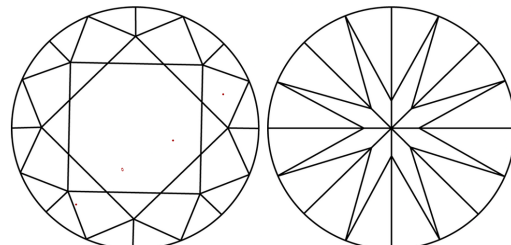


Sample Image Used

PROPORTIONS



CLARITY CHARACTERISTICS



KEY TO SYMBOLS

Red symbols indicate internal characteristics. Green symbols indicate external characteristics.



COLOR

Table with color grades: D, E, F, G, H, I, J, Faint, Very Light, Light

CLARITY

Table with clarity grades: FL, IF, VVS 1-2, VS 1-2, SI 1-2, I 1-3, Flawless, Internally Flawless, Very Very Slightly Included, Very Slightly Included, Slightly Included, Included

