



ELECTRONIC COPY

LG803627221
Report verification at igi.org



June 1, 2026
IGI Report Number **LG803627221**
Description **LABORATORY GROWN DIAMOND**
Shape and Cutting Style **SQUARE CUSHION MODIFIED BRILLIANT**
Measurements **7.18 X 6.85 X 4.48 MM**
GRADING RESULTS
Carat Weight **2.02 CARATS**
Color Grade **FANCY VIVID PINK**
Clarity Grade **VVS 2**

LABORATORY GROWN DIAMOND REPORT

June 1, 2026
IGI Report Number **LG803627221**
Description **LABORATORY GROWN DIAMOND**
Shape and Cutting Style **SQUARE CUSHION MODIFIED BRILLIANT**
Measurements **7.18 X 6.85 X 4.48 MM**

GRADING RESULTS

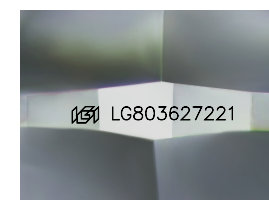
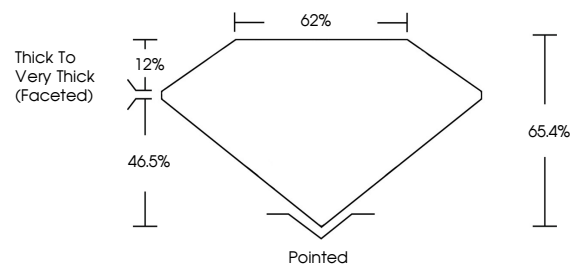
Carat Weight **2.02 CARATS**
Color Grade **FANCY VIVID PINK**
Clarity Grade **VVS 2**

ADDITIONAL GRADING INFORMATION

Polish **EXCELLENT**
Symmetry **EXCELLENT**
Fluorescence **SLIGHT**
Inscription(s) **IGI LG803627221**

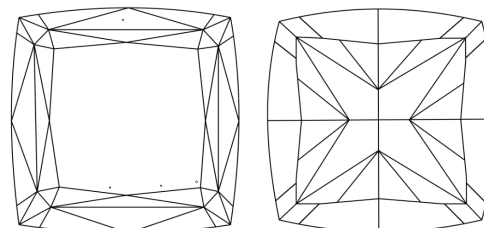
Comments: This Laboratory Grown Diamond was created by Chemical Vapor Deposition (CVD) growth process.
Indications of post-growth treatment.

PROPORTIONS



Sample Image Used

CLARITY CHARACTERISTICS



KEY TO SYMBOLS

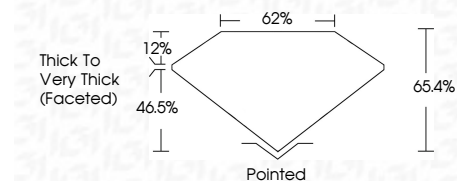
Red symbols indicate internal characteristics.
Green symbols indicate external characteristics.

COLOR

D E F G H I J Faint Very Light Light

CLARITY

FL	IF	VS ¹⁻²	VS ¹⁻²	SI ¹⁻²	I ¹⁻³
Flawless	Internally Flawless	Very Very Slightly Included	Very Slightly Included	Slightly Included	Included



ADDITIONAL GRADING INFORMATION

Polish **EXCELLENT**
Symmetry **EXCELLENT**
Fluorescence **SLIGHT**
Inscription(s) **IGI LG803627221**
Comments: This Laboratory Grown Diamond was created by Chemical Vapor Deposition (CVD) growth process.
Indications of post-growth treatment.



June 1, 2026
IGI Report No. **LG803627221**
SQUARE CUSHION MODIFIED BRILLIANT
7.18 X 6.85 X 4.48 MM
2.02 CARATS
FANCY VIVID PINK
VVS 2
65.4%
62%
Thick to Very Thick (Faceted)
Pointed
EXCELLENT
EXCELLENT
SLIGHT
IGI LG803627221
Comments: This Laboratory Grown Diamond was created by Chemical Vapor Deposition (CVD) growth process.
Indications of post-growth treatment.