



ELECTRONIC COPY

LG803626419
Report verification at igi.org



June 8, 2026
IGI Report Number LG803626419
Description LABORATORY GROWN DIAMOND
Shape and Cutting Style CUT CORNERED RECTANGULAR MODIFIED BRILLIANT
Measurements 10.76 X 7.59 X 5.10 MM
GRADING RESULTS
Carat Weight 3.57 CARATS
Color Grade E
Clarity Grade VS 2

LABORATORY GROWN DIAMOND REPORT

June 8, 2026
IGI Report Number LG803626419
Description LABORATORY GROWN DIAMOND
Shape and Cutting Style CUT CORNERED RECTANGULAR MODIFIED BRILLIANT
Measurements 10.76 X 7.59 X 5.10 MM

GRADING RESULTS

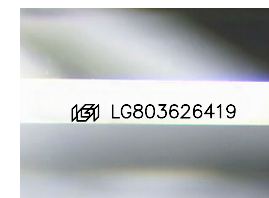
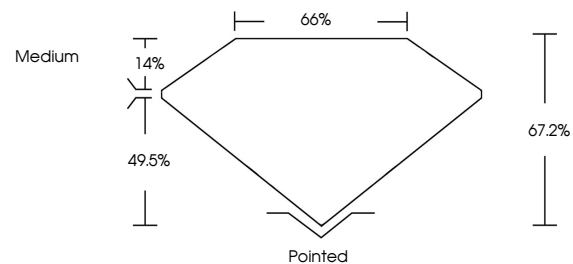
Carat Weight 3.57 CARATS
Color Grade E
Clarity Grade VS 2

ADDITIONAL GRADING INFORMATION

Polish EXCELLENT
Symmetry EXCELLENT
Fluorescence NONE
Inscription(s) LG803626419

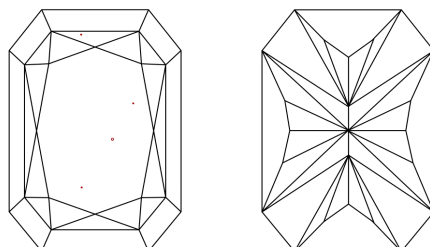
Comments: This Laboratory Grown Diamond was created by Chemical Vapor Deposition (CVD) growth process. Type IIa

PROPORTIONS



Sample Image Used

CLARITY CHARACTERISTICS



KEY TO SYMBOLS

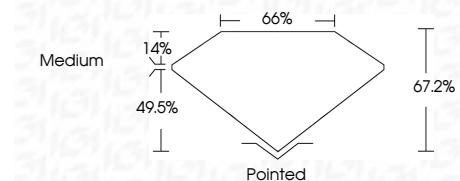
Red symbols indicate internal characteristics.
Green symbols indicate external characteristics.

COLOR

D E F G H I J Faint Very Light Light

CLARITY

FL IF VS 1-2 VS 1-2 SI 1-2 I 1-3
Flawless Internally Flawless Very Very Slightly Included Very Slightly Included Slightly Included Included



ADDITIONAL GRADING INFORMATION

Polish EXCELLENT
Symmetry EXCELLENT
Fluorescence NONE
Inscription(s) LG803626419
Comments: This Laboratory Grown Diamond was created by Chemical Vapor Deposition (CVD) growth process. Type IIa



June 8, 2026
IGI Report No. LG803626419
CUT CORNERED RECT. MODIFIED BRILLIANT
10.76 X 7.59 X 5.10 MM
3.57 CARATS
E
3.57 CARATS
E
VS 2
67.2%
66%
Medium
Pointed
EXCELLENT
EXCELLENT
NONE
LG803626419
Comments: This Laboratory Grown Diamond was created by Chemical Vapor Deposition (CVD) growth process. Type IIa