



ELECTRONIC COPY

LG803626398 Report verification at igi.org



June 8, 2026 IGI Report Number LG803626398 Description LABORATORY GROWN DIAMOND Shape and Cutting Style CUT CORNERED RECTANGULAR MODIFIED BRILLIANT Measurements 10.67 X 7.27 X 4.80 MM GRADING RESULTS Carat Weight 3.23 CARATS Color Grade FANCY INTENSE PINK Clarity Grade VVS 2

LABORATORY GROWN DIAMOND REPORT

June 8, 2026 IGI Report Number LG803626398 Description LABORATORY GROWN DIAMOND Shape and Cutting Style CUT CORNERED RECTANGULAR MODIFIED BRILLIANT Measurements 10.67 X 7.27 X 4.80 MM

GRADING RESULTS

Carat Weight 3.23 CARATS Color Grade FANCY INTENSE PINK Clarity Grade VVS 2

ADDITIONAL GRADING INFORMATION

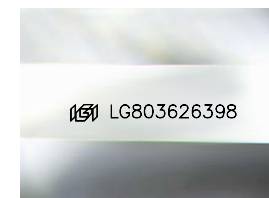
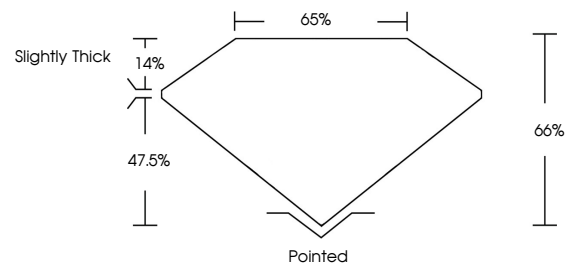
Polish EXCELLENT Symmetry EXCELLENT Fluorescence SLIGHT Inscription(s) LG803626398

Comments: This Laboratory Grown Diamond was created by Chemical Vapor Deposition (CVD) growth process.

Indications of post-growth treatment.

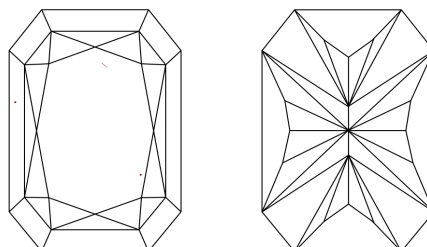
Secondary color: Brown

PROPORTIONS



Sample Image Used

CLARITY CHARACTERISTICS



KEY TO SYMBOLS

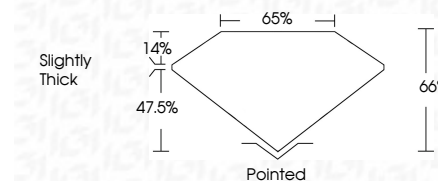
Red symbols indicate internal characteristics. Green symbols indicate external characteristics.

COLOR

D E F G H I J Faint Very Light Light

CLARITY

FL IF VVS 1-2 VS 1-2 SI 1-2 I 1-3 Flawless Internally Flawless Very Very Slightly Included Very Slightly Included Slightly Included Included



ADDITIONAL GRADING INFORMATION

Polish EXCELLENT Symmetry EXCELLENT Fluorescence SLIGHT Inscription(s) LG803626398

Comments: This Laboratory Grown Diamond was created by Chemical Vapor Deposition (CVD) growth process. Indications of post-growth treatment.

Secondary color: Brown



June 8, 2026 IGI Report No. LG803626398 CUT CORNERED RECT. MODIFIED BRILLIANT 10.67 X 7.27 X 4.80 MM 3.23 CARATS FANCY INTENSE PINK VVS 2 66% 65% Slightly Thick Pointed EXCELLENT EXCELLENT SLIGHT LG803626398 Comments: This Laboratory Grown Diamond was created by Chemical Vapor Deposition (CVD) growth process. Indications of post-growth treatment. Secondary color: Brown