



ELECTRONIC COPY

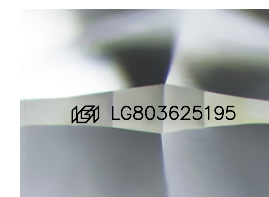
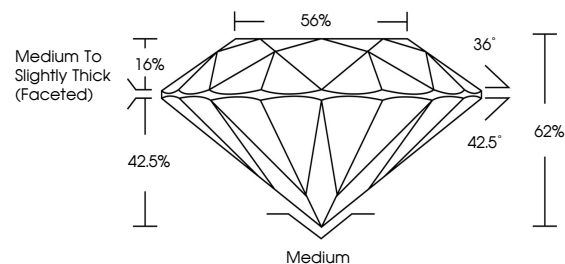
LG803625195
Report verification at igi.org



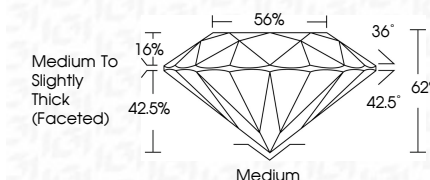
May 25, 2026
IGI Report Number **LG803625195**
Description **LABORATORY GROWN DIAMOND**
Shape and Cutting Style **OLD EUROPEAN CUT**
Measurements **9.58 - 9.58 X 5.94 MM**
GRADING RESULTS
Carat Weight **3.40 CARATS**
Color Grade **FANCY PINK**
Clarity Grade **VVS 2**

May 25, 2026
IGI Report Number **LG803625195**
Description **LABORATORY GROWN DIAMOND**
Shape and Cutting Style **OLD EUROPEAN CUT**
Measurements **9.58 - 9.58 X 5.94 MM**
GRADING RESULTS
Carat Weight **3.40 CARATS**
Color Grade **FANCY PINK**
Clarity Grade **VVS 2**

PROPORTIONS



Sample Image Used



ADDITIONAL GRADING INFORMATION

Polish **EXCELLENT**
Symmetry **EXCELLENT**
Fluorescence **SLIGHT**
Inscription(s) **IGI LG803625195**

Comments: This Laboratory Grown Diamond was created by Chemical Vapor Deposition (CVD) growth process. Indications of post-growth treatment.

ADDITIONAL GRADING INFORMATION

Polish **EXCELLENT**
Symmetry **EXCELLENT**
Fluorescence **SLIGHT**
Inscription(s) **IGI LG803625195**

Comments: This Laboratory Grown Diamond was created by Chemical Vapor Deposition (CVD) growth process. Indications of post-growth treatment.

COLOR

D E F G H I J Faint Very Light Light

CLARITY

FL	IF	VVS ¹⁻²	VS ¹⁻²	SI ¹⁻²	I ¹⁻³
Flawless	Internally Flawless	Very Very Slightly Included	Very Slightly Included	Slightly Included	Included



IGI



May 25, 2026
IGI Report No. **LG803625195**
OLD EUROPEAN CUT
3.40 CARATS
Carat Weight **FANCY PINK**
Color Grade **VVS 2**
Depth **62%**
Table **56%**
Girdle **Medium to Slightly Thick (Faceted)**
Culet **Medium**
Polish **EXCELLENT**
Symmetry **EXCELLENT**
Fluorescence **SLIGHT**
Inscription(s) **IGI LG803625195**

Comments: This Laboratory Grown Diamond was created by Chemical Vapor Deposition (CVD) growth process. Indications of post-growth treatment.