



ELECTRONIC COPY

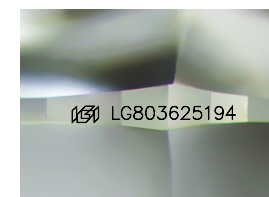
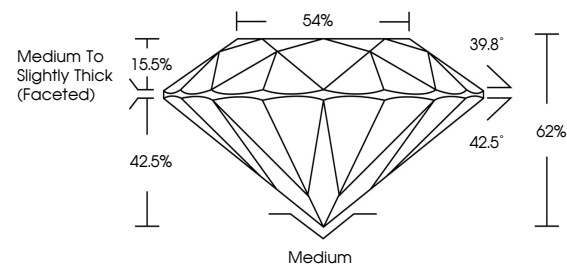
LG803625194
Report verification at igi.org



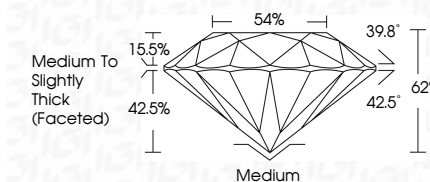
May 25, 2026
IGI Report Number **LG803625194**
Description **LABORATORY GROWN DIAMOND**
Shape and Cutting Style **OLD EUROPEAN CUT**
Measurements **10.31 - 10.29 X 6.38 MM**
GRADING RESULTS
Carat Weight **4.24 CARATS**
Color Grade **FANCY INTENSE PINK**
Clarity Grade **VVS 2**

May 25, 2026
IGI Report Number **LG803625194**
Description **LABORATORY GROWN DIAMOND**
Shape and Cutting Style **OLD EUROPEAN CUT**
Measurements **10.31 - 10.29 X 6.38 MM**
GRADING RESULTS
Carat Weight **4.24 CARATS**
Color Grade **FANCY INTENSE PINK**
Clarity Grade **VVS 2**

PROPORTIONS



Sample Image Used



ADDITIONAL GRADING INFORMATION

Polish **EXCELLENT**
Symmetry **EXCELLENT**
Fluorescence **SLIGHT**
Inscription(s) **IGI LG803625194**

Comments: This Laboratory Grown Diamond was created by Chemical Vapor Deposition (CVD) growth process. Indications of post-growth treatment.

ADDITIONAL GRADING INFORMATION

Polish **EXCELLENT**
Symmetry **EXCELLENT**
Fluorescence **SLIGHT**
Inscription(s) **IGI LG803625194**

Comments: This Laboratory Grown Diamond was created by Chemical Vapor Deposition (CVD) growth process. Indications of post-growth treatment.

COLOR

D E F G H I J Faint Very Light Light

CLARITY

FL	IF	VVS ¹⁻²	VS ¹⁻²	SI ¹⁻²	I ¹⁻³
Flawless	Internally Flawless	Very Very Slightly Included	Very Slightly Included	Slightly Included	Included



IGI



May 25, 2026
IGI Report No. **LG803625194**
OLD EUROPEAN CUT
10.31 - 10.29 X 6.38 MM
Carat Weight **4.24 CARATS**
Color Grade **FANCY INTENSE PINK**
Clarity Grade **VVS 2**
Depth **62%**
Table **54%**
Girdle **Medium to Slightly Thick (Faceted)**
Culet **Medium**
Polish **EXCELLENT**
Symmetry **EXCELLENT**
Fluorescence **SLIGHT**
Inscription(s) **IGI LG803625194**
Comments: This Laboratory Grown Diamond was created by Chemical Vapor Deposition (CVD) growth process. Indications of post-growth treatment.