



ELECTRONIC COPY

LG803623531
Report verification at igi.org



June 22, 2026

IGI Report Number **LG803623531**

Description **LABORATORY GROWN DIAMOND**

Shape and Cutting Style **SQUARE CUSHION MODIFIED
BRILLIANT**

Measurements **8.07 X 7.86 X 5.15 MM**

GRADING RESULTS

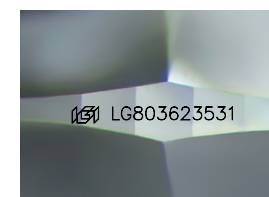
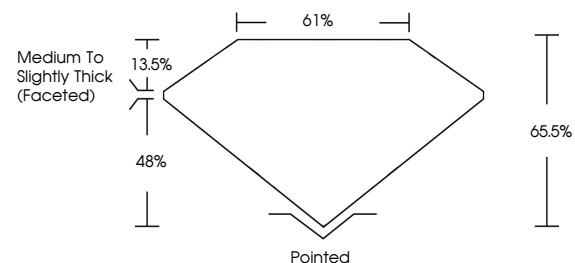
Carat Weight **2.55 CARATS**

Color Grade **D**

Clarity Grade **FLAWLESS**

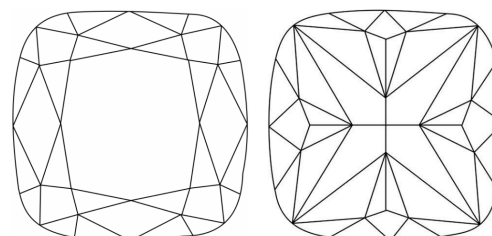
Cut Grade **EXCELLENT**

PROPORTIONS



Sample Image Used

CLARITY CHARACTERISTICS



KEY TO SYMBOLS

Red symbols indicate internal characteristics.
Green symbols indicate external characteristics.

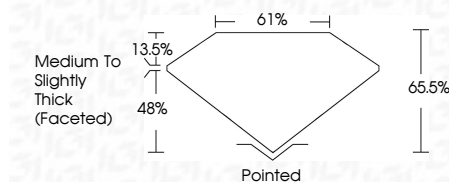
COLOR

D E F G H I J Faint Very Light Light

CLARITY

FL IF VS¹⁻² VS¹⁻² SI¹⁻² I¹⁻³

Flawless Internally Flawless Very Very Slightly Included Very Slightly Included Slightly Included Included



ADDITIONAL GRADING INFORMATION

Polish **EXCELLENT**

Symmetry **EXCELLENT**

Fluorescence **NONE**

Inscription(s) **IGI LG803623531**

Comments: As Grown - No indication of post-growth treatment.

This Laboratory Grown Diamond was created by High Pressure High Temperature (HPHT) growth process. Type II



IGI



June 22, 2026
IGI Report No. LG803623531
SQUARE CUSHION MODIFIED BRILLIANT
8.07 X 7.86 X 5.15 MM
Carat Weight 2.55 CARATS
Color Grade D
Clarity Grade FLAWLESS
Cut Grade EXCELLENT
Depth 66.05%
Table 61%
Girdle Medium To Slightly Thick (Faceted)
Culet Pointed
Polish EXCELLENT
Symmetry EXCELLENT
Fluorescence NONE
Inscription(s) IGI LG803623531
Comments: As Grown - No indication of post-growth treatment.
This Laboratory Grown Diamond was created by High Pressure High Temperature (HPHT) growth process. Type II