



ELECTRONIC COPY

LG803618190
Report verification at igi.org



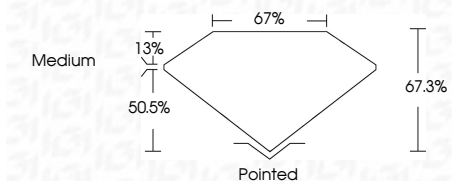
May 20, 2026
IGI Report Number **LG803618190**
Description **LABORATORY GROWN DIAMOND**

Shape and Cutting Style **CUT CORNERED
RECTANGULAR MODIFIED
BRILLIANT**

Measurements **12.14 X 8.42 X 5.67 MM**

GRADING RESULTS

Carat Weight **5.01 CARATS**
Color Grade **H**
Clarity Grade **VVS 2**



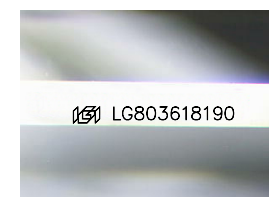
ADDITIONAL GRADING INFORMATION

Polish **EXCELLENT**
Symmetry **EXCELLENT**
Fluorescence **NONE**
Inscription(s) **IGI LG803618190**
Comments: This Laboratory Grown Diamond was created by Chemical Vapor Deposition (CVD) growth process. Type IIa



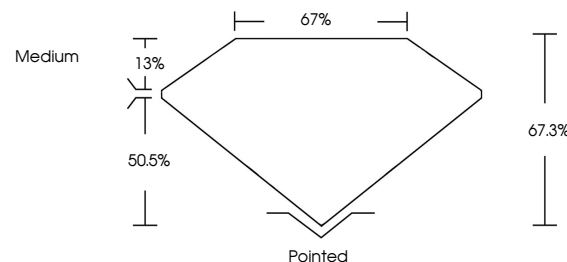
IGI

May 20, 2026
IGI Report No LG803618190
CUT CORNERED RECT. MODIFIED BRILLIANT
12.14 X 8.42 X 5.67 MM
5.01 CARATS
H
VVS 2
57.5%
67%
Medium
Pointed
EXCELLENT
EXCELLENT
NONE
IGI LG803618190
Comments: This Laboratory Grown Diamond was created by Chemical Vapor Deposition (CVD) growth process. Type IIa

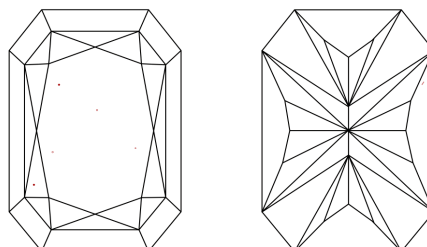


Sample Image Used

PROPORTIONS



CLARITY CHARACTERISTICS



KEY TO SYMBOLS

Red symbols indicate internal characteristics.
Green symbols indicate external characteristics.

COLOR

D E F G H I J Faint Very Light Light

CLARITY

FL	IF	VVS ¹⁻²	VS ¹⁻²	SI ¹⁻²	I ¹⁻³
Flawless	Internally Flawless	Very Very Slightly Included	Very Slightly Included	Slightly Included	Included

