



ELECTRONIC COPY

LG803618095 Report verification at igi.org



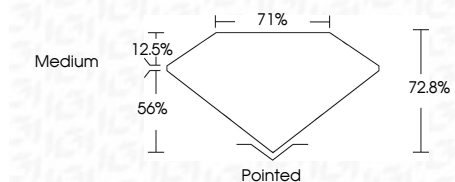
May 19, 2026 IGI Report Number LG803618095 Description LABORATORY GROWN DIAMOND

Shape and Cutting Style CUT CORNERED RECTANGULAR MODIFIED BRILLIANT

Measurements 6.55 X 5.00 X 3.64 MM

GRADING RESULTS

Carat Weight 1.01 CARAT Color Grade E Clarity Grade VS 1



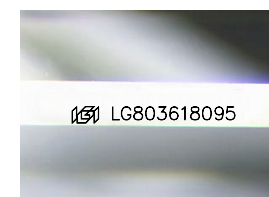
ADDITIONAL GRADING INFORMATION

Polish EXCELLENT Symmetry EXCELLENT Fluorescence NONE Inscription(s) LG803618095 Comments: This Laboratory Grown Diamond was created by Chemical Vapor Deposition (CVD) growth process. Type IIa



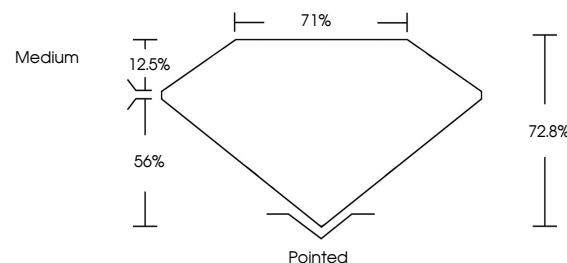
May 19, 2026 IGI Report No LG803618095 CUT CORNERED RECT. MODIFIED BRILLIANT 6.55 X 5.00 X 3.64 MM 1.01 CARAT E VS 1 72.8% 56% 12.5% Medium Pointed EXCELLENT EXCELLENT NONE LG803618095

Comments: This Laboratory Grown Diamond was created by Chemical Vapor Deposition (CVD) growth process. Type IIa

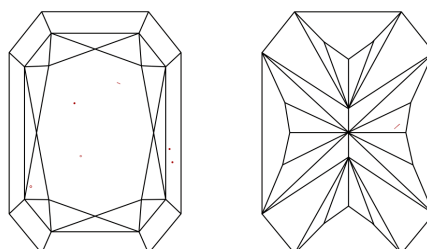


Sample Image Used

PROPORTIONS



CLARITY CHARACTERISTICS



KEY TO SYMBOLS

Red symbols indicate internal characteristics. Green symbols indicate external characteristics.

COLOR

D E F G H I J Faint Very Light Light

CLARITY

FL IF VS 1-2 VS 2-3 SI 1-2 I 1-3 Flawless Internally Flawless Very Very Slightly Included Very Slightly Included Slightly Included Included

