



**ELECTRONIC COPY**

LG803617989  
Report verification at igi.org



May 19, 2026  
IGI Report Number **LG803617989**  
Description **LABORATORY GROWN DIAMOND**  
Shape and Cutting Style **ROUND BRILLIANT**  
Measurements **6.49 - 6.52 X 3.87 MM**  
**GRADING RESULTS**  
Carat Weight **1.00 CARAT**  
Color Grade **F**  
Clarity Grade **VS 2**  
Cut Grade **EXCELLENT**

May 19, 2026  
IGI Report Number **LG803617989**  
Description **LABORATORY GROWN DIAMOND**  
Shape and Cutting Style **ROUND BRILLIANT**  
Measurements **6.49 - 6.52 X 3.87 MM**

**GRADING RESULTS**

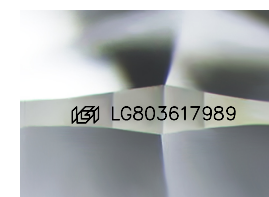
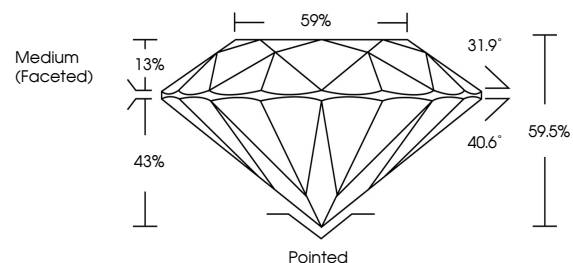
Carat Weight **1.00 CARAT**  
Color Grade **F**  
Clarity Grade **VS 2**  
Cut Grade **EXCELLENT**

**ADDITIONAL GRADING INFORMATION**

Polish **EXCELLENT**  
Symmetry **EXCELLENT**  
Fluorescence **NONE**  
Inscription(s) **LG803617989**

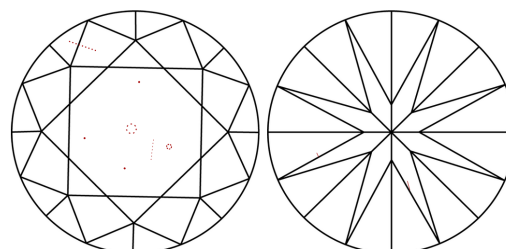
Comments: This Laboratory Grown Diamond was created by Chemical Vapor Deposition (CVD) growth process.  
Type IIa

**PROPORTIONS**



Sample Image Used

**CLARITY CHARACTERISTICS**



**KEY TO SYMBOLS**

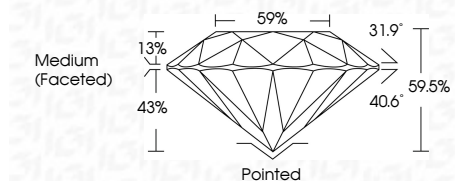
Red symbols indicate internal characteristics.  
Green symbols indicate external characteristics.

**COLOR**

D E F G H I J Faint Very Light Light

**CLARITY**

FL	IF	VS <sup>1-2</sup>	VS <sup>1-2</sup>	SI <sup>1-2</sup>	I <sup>1-3</sup>
Flawless	Internally Flawless	Very Very Slightly Included	Very Slightly Included	Slightly Included	Included



**ADDITIONAL GRADING INFORMATION**

Polish **EXCELLENT**  
Symmetry **EXCELLENT**  
Fluorescence **NONE**  
Inscription(s) **LG803617989**  
Comments: This Laboratory Grown Diamond was created by Chemical Vapor Deposition (CVD) growth process.  
Type IIa



May 19, 2026  
IGI Report No LG803617989  
**ROUND BRILLIANT**  
6.49 - 6.52 X 3.87 MM  
1.00 CARAT  
F  
Color Grade  
VS 2  
Clarity Grade  
EXCELLENT  
Depth  
59.5%  
Table  
59%  
Girdle  
Medium (Faceted)  
Culet  
Pointed  
Polish  
EXCELLENT  
Symmetry  
EXCELLENT  
Fluorescence  
NONE  
Inscription(s)  
IGI LG803617989  
Comments: This Laboratory Grown Diamond was created by Chemical Vapor Deposition (CVD) growth process.  
Type IIa