



ELECTRONIC COPY

LG803617957 Report verification at igi.org



May 19, 2026 IGI Report Number LG803617957 Description LABORATORY GROWN DIAMOND Shape and Cutting Style CUT CORNERED RECTANGULAR MODIFIED BRILLIANT Measurements 9.21 X 6.24 X 4.04 MM GRADING RESULTS Carat Weight 2.05 CARATS Color Grade D Clarity Grade VS 1

LABORATORY GROWN DIAMOND REPORT

May 19, 2026 IGI Report Number LG803617957 Description LABORATORY GROWN DIAMOND Shape and Cutting Style CUT CORNERED RECTANGULAR MODIFIED BRILLIANT Measurements 9.21 X 6.24 X 4.04 MM

GRADING RESULTS

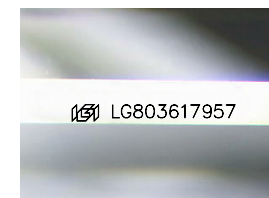
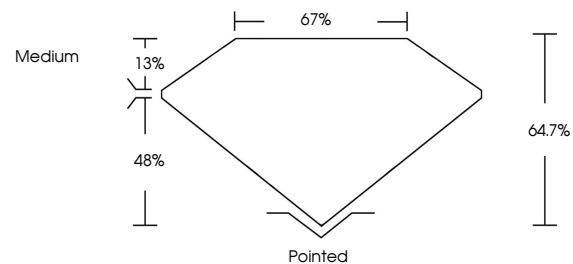
Carat Weight 2.05 CARATS Color Grade D Clarity Grade VS 1

ADDITIONAL GRADING INFORMATION

Polish EXCELLENT Symmetry EXCELLENT Fluorescence NONE Inscription(s) LG803617957

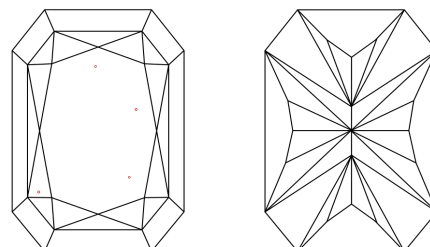
Comments: This Laboratory Grown Diamond was created by Chemical Vapor Deposition (CVD) growth process. Type IIa

PROPORTIONS



Sample Image Used

CLARITY CHARACTERISTICS



KEY TO SYMBOLS

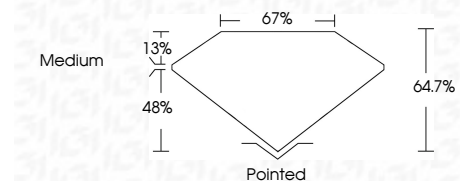
Red symbols indicate internal characteristics. Green symbols indicate external characteristics.

COLOR

D E F G H I J Faint Very Light Light

CLARITY

FL IF VS 1-2 VS 2-3 SI 1-2 I 1-3 Flawless Internally Flawless Very Very Slightly Included Very Slightly Included Slightly Included Included



ADDITIONAL GRADING INFORMATION

Polish EXCELLENT Symmetry EXCELLENT Fluorescence NONE Inscription(s) LG803617957 Comments: This Laboratory Grown Diamond was created by Chemical Vapor Deposition (CVD) growth process. Type IIa



May 19, 2026 IGI Report No LG803617957 CUT CORNERED RECT. MODIFIED BRILLIANT 9.21 X 6.24 X 4.04 MM 2.05 CARATS D VS 1 64.7% 67% Medium Pointed EXCELLENT EXCELLENT NONE NONE LG803617957 Comments: This Laboratory Grown Diamond was created by Chemical Vapor Deposition (CVD) growth process. Type IIa