



LABORATORY GROWN DIAMOND REPORT

May 19, 2026
 IGI Report Number **LG803617806**
 Description **LABORATORY GROWN DIAMOND**
 Shape and Cutting Style **ROUND BRILLIANT**
 Measurements **5.18 - 5.20 X 3.16 MM**

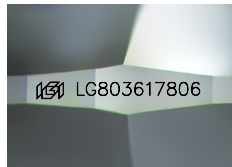
GRADING RESULTS

Carat Weight **0.52 CARAT**
 Color Grade **F**
 Clarity Grade **VS 1**
 Cut Grade **IDEAL**

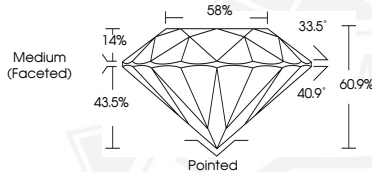
ADDITIONAL GRADING INFORMATION

Polish **EXCELLENT**
 Symmetry **EXCELLENT**
 Fluorescence **NONE**
 Inscription(s) **IGI LG803617806**

Comments: This Laboratory Grown Diamond was created by Chemical Vapor Deposition (CVD) growth process. Type IIa



Sample Image Used



May 19, 2026

IGI Report Number LG803617806
ROUND BRILLIANT
LABORATORY GROWN DIAMOND
5.18 - 5.20 X 3.16 MM
 Carat Weight **0.52 CARAT**
 Color Grade **F**
 Clarity Grade **VS 1**
 Cut Grade **IDEAL**
 Polish **EXCELLENT**
 Symmetry **EXCELLENT**
 Fluorescence **NONE**
 Inscription(s) **IGI LG803617806**

Comments: This Laboratory Grown Diamond was created by Chemical Vapor Deposition (CVD) growth process. Type IIa



May 19, 2026

IGI Report Number LG803617806
ROUND BRILLIANT
LABORATORY GROWN DIAMOND
5.18 - 5.20 X 3.16 MM
 Carat Weight **0.52 CARAT**
 Color Grade **F**
 Clarity Grade **VS 1**
 Cut Grade **IDEAL**
 Polish **EXCELLENT**
 Symmetry **EXCELLENT**
 Fluorescence **NONE**
 Inscription(s) **IGI LG803617806**

Comments: This Laboratory Grown Diamond was created by Chemical Vapor Deposition (CVD) growth process. Type IIa



THIS DOCUMENT WAS PRODUCED WITH THE FOLLOWING SECURITY MEASURES: SPECIAL DOCUMENT PAPER, INK SCREENS, WATERMARK, BACKGROUND DESIGNS, HOLOGRAM AND OTHER SECURITY FEATURES NOT LISTED AND DO EXCEED DOCUMENT SECURITY INDUSTRY GUIDELINES.