



ELECTRONIC COPY

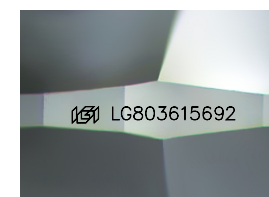
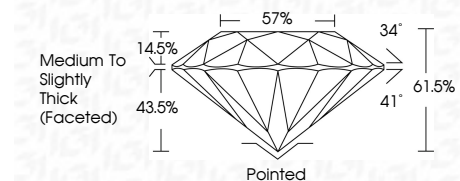
LG803615692
Report verification at igi.org



May 19, 2026
IGI Report Number LG803615692
Description LABORATORY GROWN DIAMOND
Shape and Cutting Style ROUND BRILLIANT
Measurements 6.98 - 7.00 X 4.30 MM

GRADING RESULTS

Carat Weight 1.29 CARAT
Color Grade E
Clarity Grade VVS 2
Cut Grade IDEAL



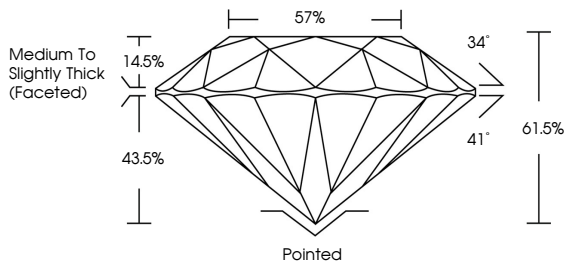
Sample Image Used

ADDITIONAL GRADING INFORMATION

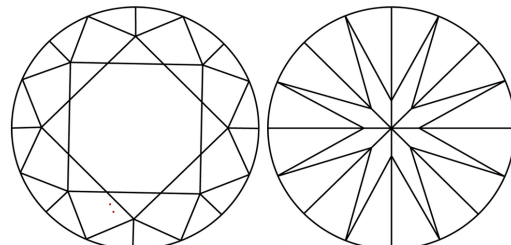
Polish EXCELLENT
Symmetry EXCELLENT
Fluorescence NONE
Inscription(s) IGI LG803615692
Comments: This Laboratory Grown Diamond was created by Chemical Vapor Deposition (CVD) growth process. Type IIa



PROPORTIONS



CLARITY CHARACTERISTICS



KEY TO SYMBOLS

Red symbols indicate internal characteristics.
Green symbols indicate external characteristics.

COLOR

Table with columns D, E, F, G, H, I, J, Faint, Very Light, Light

CLARITY

Table with columns FL, IF, VVS 1-2, VS 1-2, SI 1-2, I 1-3

LABORATORY GROWN DIAMOND REPORT

May 19, 2026
IGI Report Number LG803615692
Description LABORATORY GROWN DIAMOND
Shape and Cutting Style ROUND BRILLIANT
Measurements 6.98 - 7.00 X 4.30 MM

GRADING RESULTS

Carat Weight 1.29 CARAT
Color Grade E
Clarity Grade VVS 2
Cut Grade IDEAL

ADDITIONAL GRADING INFORMATION

Polish EXCELLENT
Symmetry EXCELLENT
Fluorescence NONE
Inscription(s) IGI LG803615692

Comments: This Laboratory Grown Diamond was created by Chemical Vapor Deposition (CVD) growth process. Type IIa

Certified SUSTAINABILITY RATED DIAMOND. SCS GLOBAL SERVICES. All certified diamonds come with an individual certificate, ONLY available at an accredited retailer. QR code.



Summary of report details: May 19, 2026, IGI Report No. LG803615692, ROUND BRILLIANT, 6.98 - 7.00 X 4.30 MM, 1.29 CARAT, E, VVS 2, IDEAL, 61.5%, 57%, Medium To Slightly Thick (Faceted), Pointed, EXCELLENT, EXCELLENT, NONE, IGI LG803615692. Comments: This Laboratory Grown Diamond was created by Chemical Vapor Deposition (CVD) growth process. Type IIa