



ELECTRONIC COPY

LG803614536
Report verification at igi.org



June 23, 2026
IGI Report Number **LG803614536**
Description **LABORATORY GROWN DIAMOND**
Shape and Cutting Style **CUT CORNERED
RECTANGULAR MODIFIED
BRILLIANT**
Measurements **9.43 X 7.50 X 4.72 MM**
GRADING RESULTS
Carat Weight **3.07 CARATS**
Color Grade **FANCY VIVID PINK**
Clarity Grade **VS 1**

June 23, 2026
IGI Report Number **LG803614536**
Description **LABORATORY GROWN DIAMOND**
Shape and Cutting Style **CUT CORNERED RECTANGULAR
MODIFIED BRILLIANT**
Measurements **9.43 X 7.50 X 4.72 MM**

GRADING RESULTS

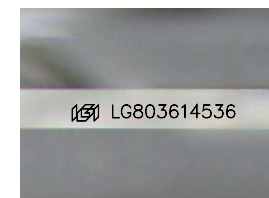
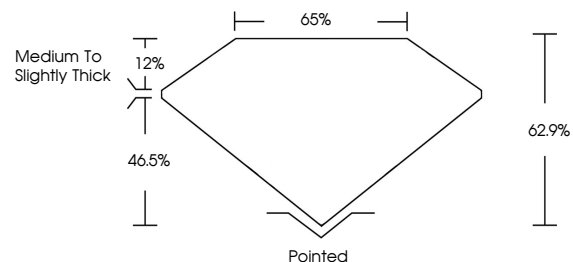
Carat Weight **3.07 CARATS**
Color Grade **FANCY VIVID PINK**
Clarity Grade **VS 1**

ADDITIONAL GRADING INFORMATION

Polish **EXCELLENT**
Symmetry **EXCELLENT**
Fluorescence **STRONG**
Inscription(s) **IGI LG803614536**

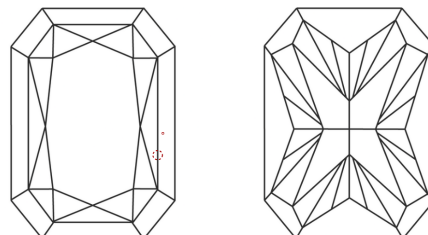
Comments: This Laboratory Grown Diamond was created by Chemical Vapor Deposition (CVD) growth process.
Indications of post-growth treatment.

PROPORTIONS



Sample Image Used

CLARITY CHARACTERISTICS



KEY TO SYMBOLS

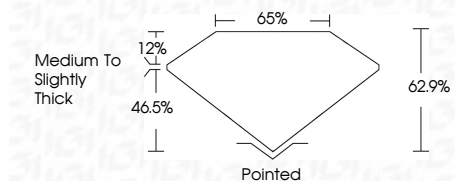
Red symbols indicate internal characteristics.
Green symbols indicate external characteristics.

COLOR

D E F G H I J Faint Very Light Light

CLARITY

FL	IF	VS ¹⁻²	VS ¹⁻²	SI ¹⁻²	I ¹⁻³
Flawless	Internally Flawless	Very Very Slightly Included	Very Slightly Included	Slightly Included	Included



ADDITIONAL GRADING INFORMATION

Polish **EXCELLENT**
Symmetry **EXCELLENT**
Fluorescence **STRONG**
Inscription(s) **IGI LG803614536**
Comments: This Laboratory Grown Diamond was created by Chemical Vapor Deposition (CVD) growth process.
Indications of post-growth treatment.



IGI



June 23, 2026
IGI Report No. LG803614536
CUT CORNERED RECT. MODIFIED BRILLIANT
9.43 X 7.50 X 4.72 MM
3.07 CARATS
FANCY VIVID PINK
VS 1
62.9%
65%
Medium to Slightly Thick
Pointed
EXCELLENT
EXCELLENT
STRONG
IGI LG803614536
Comments: This Laboratory Grown Diamond was created by Chemical Vapor Deposition (CVD) growth process.
Indications of post-growth treatment.