



ELECTRONIC COPY

LG803614433
Report verification at igi.org



June 12, 2026
IGI Report Number **LG803614433**
Description **LABORATORY GROWN DIAMOND**
Shape and Cutting Style **CUT CORNERED RECTANGULAR MODIFIED BRILLIANT**
Measurements **15.16 X 10.64 X 6.55 MM**
GRADING RESULTS
Carat Weight **10.01 CARATS**
Color Grade **FANCY VIVID PINK**
Clarity Grade **VS 1**

June 12, 2026
IGI Report Number **LG803614433**
Description **LABORATORY GROWN DIAMOND**
Shape and Cutting Style **CUT CORNERED RECTANGULAR MODIFIED BRILLIANT**
Measurements **15.16 X 10.64 X 6.55 MM**

GRADING RESULTS

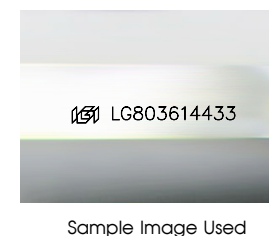
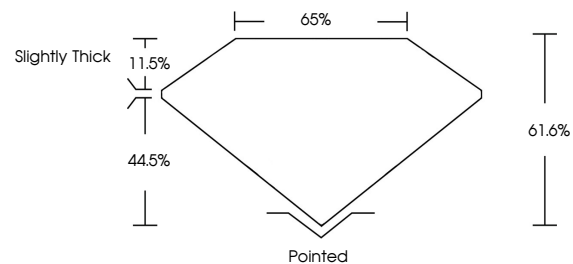
Carat Weight **10.01 CARATS**
Color Grade **FANCY VIVID PINK**
Clarity Grade **VS 1**

ADDITIONAL GRADING INFORMATION

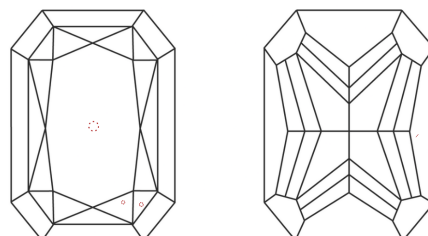
Polish **EXCELLENT**
Symmetry **VERY GOOD**
Fluorescence **STRONG**
Inscription(s) **IGI LG803614433**

Comments: This Laboratory Grown Diamond was created by Chemical Vapor Deposition (CVD) growth process.
Indications of post-growth treatment.

PROPORTIONS



CLARITY CHARACTERISTICS



KEY TO SYMBOLS

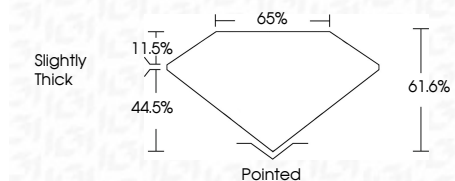
Red symbols indicate internal characteristics.
Green symbols indicate external characteristics.

COLOR

D E F G H I J Faint Very Light Light

CLARITY

FL IF VS¹⁻² VS¹⁻² SI¹⁻² I¹⁻³
Flawless Internally Flawless Very Very Slightly Included Very Slightly Included Slightly Included Included



ADDITIONAL GRADING INFORMATION

Polish **EXCELLENT**
Symmetry **VERY GOOD**
Fluorescence **STRONG**
Inscription(s) **IGI LG803614433**
Comments: This Laboratory Grown Diamond was created by Chemical Vapor Deposition (CVD) growth process.
Indications of post-growth treatment.



June 12, 2026
IGI Report No. LG803614433
CUT CORNERED RECT. MODIFIED BRILLIANT
15.16 X 10.64 X 6.55 MM
Carat Weight 10.01 CARATS
Color Grade FANCY VIVID PINK
Clarity Grade VS 1
Table 11.5%
Depth 44.5%
Girdle Slightly Thick
Culet Pointed
Polish EXCELLENT
Symmetry VERY GOOD
Fluorescence STRONG
Inscription(s) IGI LG803614433
Comments: This Laboratory Grown Diamond was created by Chemical Vapor Deposition (CVD) growth process.
Indications of post-growth treatment.