



ELECTRONIC COPY

LG803606439
Report verification at igi.org



May 28, 2026
IGI Report Number **LG803606439**
Description **LABORATORY GROWN DIAMOND**
Shape and Cutting Style **CUT CORNERED
RECTANGULAR MIXED CUT**
Measurements **9.71 X 6.88 X 4.73 MM**
GRADING RESULTS
Carat Weight **3.05 CARATS**
Color Grade **FANCY INTENSE YELLOW**
Clarity Grade **VS 2**

LABORATORY GROWN DIAMOND REPORT

May 28, 2026
IGI Report Number **LG803606439**
Description **LABORATORY GROWN DIAMOND**
Shape and Cutting Style **CUT CORNERED RECTANGULAR
MIXED CUT**
Measurements **9.71 X 6.88 X 4.73 MM**

GRADING RESULTS

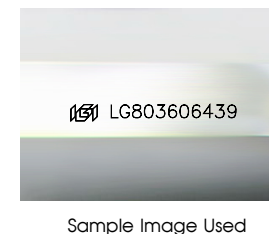
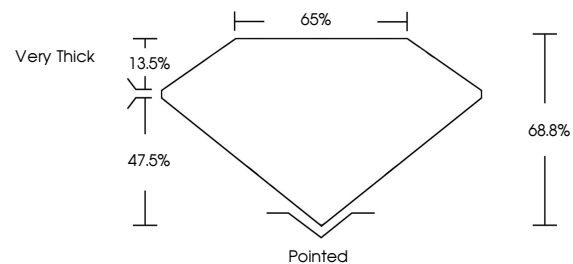
Carat Weight **3.05 CARATS**
Color Grade **FANCY INTENSE YELLOW**
Clarity Grade **VS 2**

ADDITIONAL GRADING INFORMATION

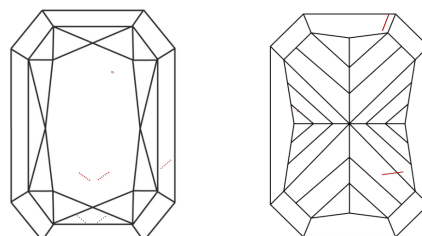
Polish **EXCELLENT**
Symmetry **EXCELLENT**
Fluorescence **NONE**
Inscription(s) **IGI LG803606439**

Comments: This Laboratory Grown Diamond was created by Chemical Vapor Deposition (CVD) growth process.
Indications of post-growth treatment.

PROPORTIONS



CLARITY CHARACTERISTICS



KEY TO SYMBOLS

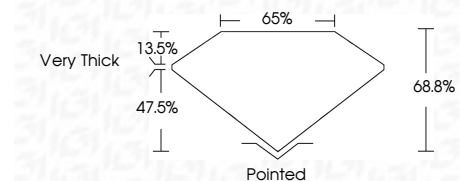
Red symbols indicate internal characteristics.
Green symbols indicate external characteristics.

COLOR

D E F G H I J Faint Very Light Light

CLARITY

FL	IF	VS ¹⁻²	VS ¹⁻²	SI ¹⁻²	I ¹⁻³
Flawless	Internally Flawless	Very Very Slightly Included	Very Slightly Included	Slightly Included	Included



ADDITIONAL GRADING INFORMATION

Polish **EXCELLENT**
Symmetry **EXCELLENT**
Fluorescence **NONE**
Inscription(s) **IGI LG803606439**
Comments: This Laboratory Grown Diamond was created by Chemical Vapor Deposition (CVD) growth process.
Indications of post-growth treatment.



May 28, 2026
IGI Report No. LG803606439
CUT CORNERED RECT. MIXED CUT
3.05 CARATS
Carat Weight
Color Grade FANCY INTENSE YELLOW
Clarity Grade VS 2
Depth 68.8%
Table 47.5%
Girdle Very Thick
Culet Pointed
Polish EXCELLENT
Symmetry EXCELLENT
Fluorescence NONE
Inscription(s) IGI LG803606439
Comments: This Laboratory Grown Diamond was created by Chemical Vapor Deposition (CVD) growth process.
Indications of post-growth treatment.