



**ELECTRONIC COPY**

LG803606429  
Report verification at [igi.org](http://igi.org)



May 30, 2026  
IGI Report Number **LG803606429**  
Description **LABORATORY GROWN DIAMOND**  
Shape and Cutting Style **SQUARE CUSHION MODIFIED BRILLIANT**  
Measurements **8.04 X 7.79 X 5.33 MM**  
**GRADING RESULTS**  
Carat Weight **3.02 CARATS**  
Color Grade **FANCY YELLOW**  
Clarity Grade **VVS 2**

**LABORATORY GROWN DIAMOND REPORT**

May 30, 2026  
IGI Report Number **LG803606429**  
Description **LABORATORY GROWN DIAMOND**  
Shape and Cutting Style **SQUARE CUSHION MODIFIED BRILLIANT**  
Measurements **8.04 X 7.79 X 5.33 MM**

**GRADING RESULTS**

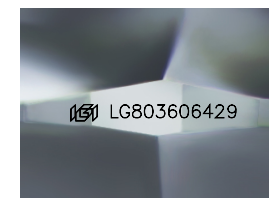
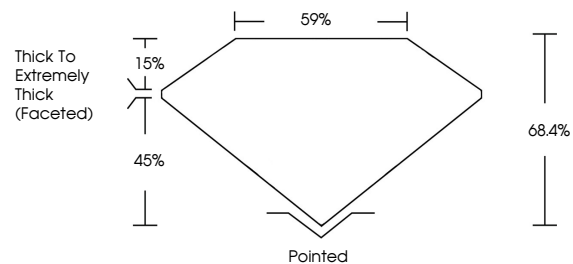
Carat Weight **3.02 CARATS**  
Color Grade **FANCY YELLOW**  
Clarity Grade **VVS 2**

**ADDITIONAL GRADING INFORMATION**

Polish **EXCELLENT**  
Symmetry **EXCELLENT**  
Fluorescence **NONE**  
Inscription(s) **IGI LG803606429**

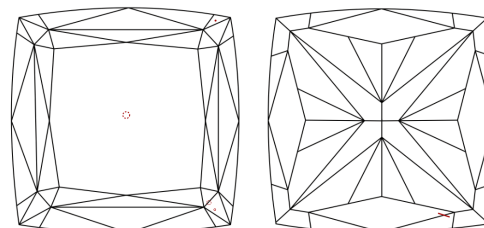
Comments: This Laboratory Grown Diamond was created by Chemical Vapor Deposition (CVD) growth process.

**PROPORTIONS**



Sample Image Used

**CLARITY CHARACTERISTICS**



**KEY TO SYMBOLS**

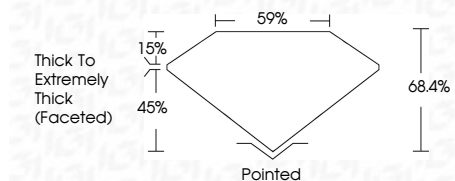
Red symbols indicate internal characteristics.  
Green symbols indicate external characteristics.

**COLOR**

D E F G H I J Faint Very Light Light

**CLARITY**

FL	IF	VVS <sup>1-2</sup>	VS <sup>1-2</sup>	SI <sup>1-2</sup>	I <sup>1-3</sup>
Flawless	Internally Flawless	Very Very Slightly Included	Very Slightly Included	Slightly Included	Included



**ADDITIONAL GRADING INFORMATION**

Polish **EXCELLENT**  
Symmetry **EXCELLENT**  
Fluorescence **NONE**  
Inscription(s) **IGI LG803606429**  
Comments: This Laboratory Grown Diamond was created by Chemical Vapor Deposition (CVD) growth process.



May 30, 2026  
IGI Report No. **LG803606429**  
**SQUARE CUSHION MODIFIED BRILLIANT**  
8.04 X 7.79 X 5.33 MM  
3.02 CARATS  
FANCY YELLOW  
VVS 2  
68.4%  
45%  
15%  
Thick To Extremely Thick (Faceted)  
Pointed  
EXCELLENT  
EXCELLENT  
NONE  
IGI LG803606429  
Comments: This Laboratory Grown Diamond was created by Chemical Vapor Deposition (CVD) growth process.