



ELECTRONIC COPY

LG803605784
Report verification at igi.org



June 2, 2026

IGI Report Number **LG803605784**

Description **LABORATORY GROWN DIAMOND**

Shape and Cutting Style **OVAL BRILLIANT**

Measurements **14.58 X 7.04 X 4.59 MM**

GRADING RESULTS

Carat Weight **3.01 CARATS**

Color Grade **FANCY INTENSE PINK**

Clarity Grade **VS 1**

June 2, 2026
IGI Report Number **LG803605784**
Description **LABORATORY GROWN DIAMOND**
Shape and Cutting Style **OVAL BRILLIANT**
Measurements **14.58 X 7.04 X 4.59 MM**

GRADING RESULTS

Carat Weight **3.01 CARATS**

Color Grade **FANCY INTENSE PINK**

Clarity Grade **VS 1**

ADDITIONAL GRADING INFORMATION

Polish **EXCELLENT**

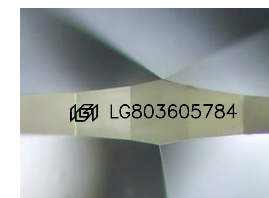
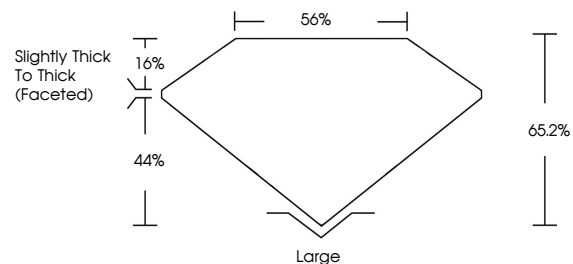
Symmetry **EXCELLENT**

Fluorescence **SLIGHT**

Inscription(s) **IGI LG803605784**

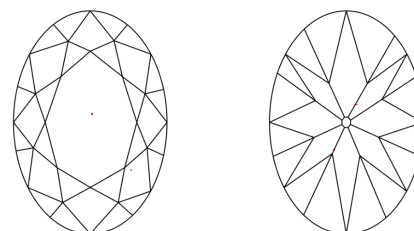
Comments: This Laboratory Grown Diamond was created by Chemical Vapor Deposition (CVD) growth process.
Indications of post-growth treatment.

PROPORTIONS



Sample Image Used

CLARITY CHARACTERISTICS



KEY TO SYMBOLS

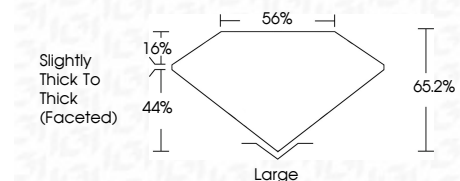
Red symbols indicate internal characteristics.
Green symbols indicate external characteristics.

COLOR

D E F G H I J Faint Very Light Light

CLARITY

FL	IF	VS ¹⁻²	VS ¹⁻²	SI ¹⁻²	I ¹⁻³
Flawless	Internally Flawless	Very Very Slightly Included	Very Slightly Included	Slightly Included	Included



ADDITIONAL GRADING INFORMATION

Polish **EXCELLENT**

Symmetry **EXCELLENT**

Fluorescence **SLIGHT**

Inscription(s) **IGI LG803605784**

Comments: This Laboratory Grown Diamond was created by Chemical Vapor Deposition (CVD) growth process.
Indications of post-growth treatment.



June 2, 2026
IGI Report No LG803605784
OVAL BRILLIANT
3.01 CARATS
FANCY INTENSE PINK
VS 1
14.58 X 7.04 X 4.59 MM
Color Grade
Fancy Intense Pink
Clarity Grade
VS 1
Depth
65.2%
Table
56%
Girdle
Slightly Thick To Thick (Faceted)
Culet
Large
Polish
EXCELLENT
Symmetry
EXCELLENT
Fluorescence
SLIGHT
Inscription(s)
IGI LG803605784

Comments: This Laboratory Grown Diamond was created by Chemical Vapor Deposition (CVD) growth process.
Indications of post-growth treatment.