



**ELECTRONIC COPY**

LG803605776  
Report verification at igi.org



May 25, 2026  
IGI Report Number **LG803605776**  
Description **LABORATORY GROWN DIAMOND**  
Shape and Cutting Style **MODIFIED OCTAGON STEP CUT**  
Measurements **10.33 X 6.75 X 4.53 MM**  
**GRADING RESULTS**  
Carat Weight **3.02 CARATS**  
Color Grade **FANCY INTENSE PINK**  
Clarity Grade **VVS 2**

**LABORATORY GROWN DIAMOND REPORT**

May 25, 2026  
IGI Report Number **LG803605776**  
Description **LABORATORY GROWN DIAMOND**  
Shape and Cutting Style **MODIFIED OCTAGON STEP CUT**  
Measurements **10.33 X 6.75 X 4.53 MM**

**GRADING RESULTS**

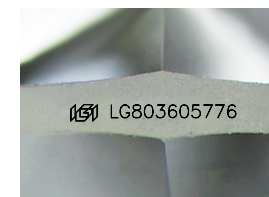
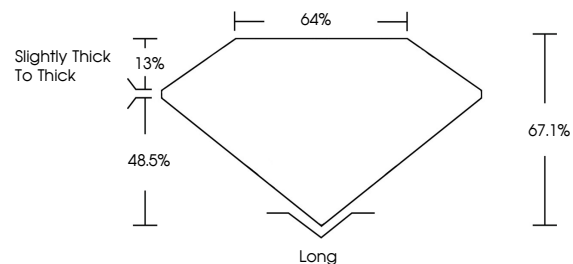
Carat Weight **3.02 CARATS**  
Color Grade **FANCY INTENSE PINK**  
Clarity Grade **VVS 2**

**ADDITIONAL GRADING INFORMATION**

Polish **EXCELLENT**  
Symmetry **EXCELLENT**  
Fluorescence **SLIGHT**  
Inscription(s) **IGI LG803605776**

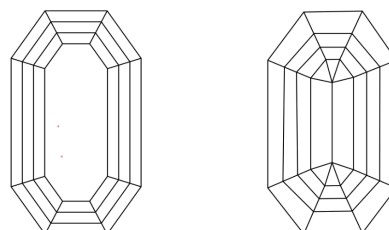
Comments: This Laboratory Grown Diamond was created by Chemical Vapor Deposition (CVD) growth process.  
Indications of post-growth treatment.

**PROPORTIONS**



Sample Image Used

**CLARITY CHARACTERISTICS**



**KEY TO SYMBOLS**

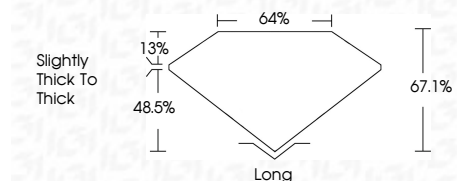
Red symbols indicate internal characteristics.  
Green symbols indicate external characteristics.

**COLOR**

D E F G H I J Faint Very Light Light

**CLARITY**

FL	IF	VVS <sup>1-2</sup>	VS <sup>1-2</sup>	SI <sup>1-2</sup>	I <sup>1-3</sup>
Flawless	Internally Flawless	Very Very Slightly Included	Very Slightly Included	Slightly Included	Included



**ADDITIONAL GRADING INFORMATION**

Polish **EXCELLENT**  
Symmetry **EXCELLENT**  
Fluorescence **SLIGHT**  
Inscription(s) **IGI LG803605776**  
Comments: This Laboratory Grown Diamond was created by Chemical Vapor Deposition (CVD) growth process.  
Indications of post-growth treatment.



May 25, 2026  
IGI Report No LG803605776  
MODIFIED OCTAGON STEP CUT  
10.33 X 6.75 X 4.53 MM  
3.02 CARATS  
FANCY INTENSE PINK  
VVS 2  
67.1%  
48.5%  
Slightly thick to thick  
Long  
EXCELLENT  
EXCELLENT  
SLIGHT  
IGI LG803605776  
Comments: This Laboratory Grown Diamond was created by Chemical Vapor Deposition (CVD) growth process.  
Indications of post-growth treatment.